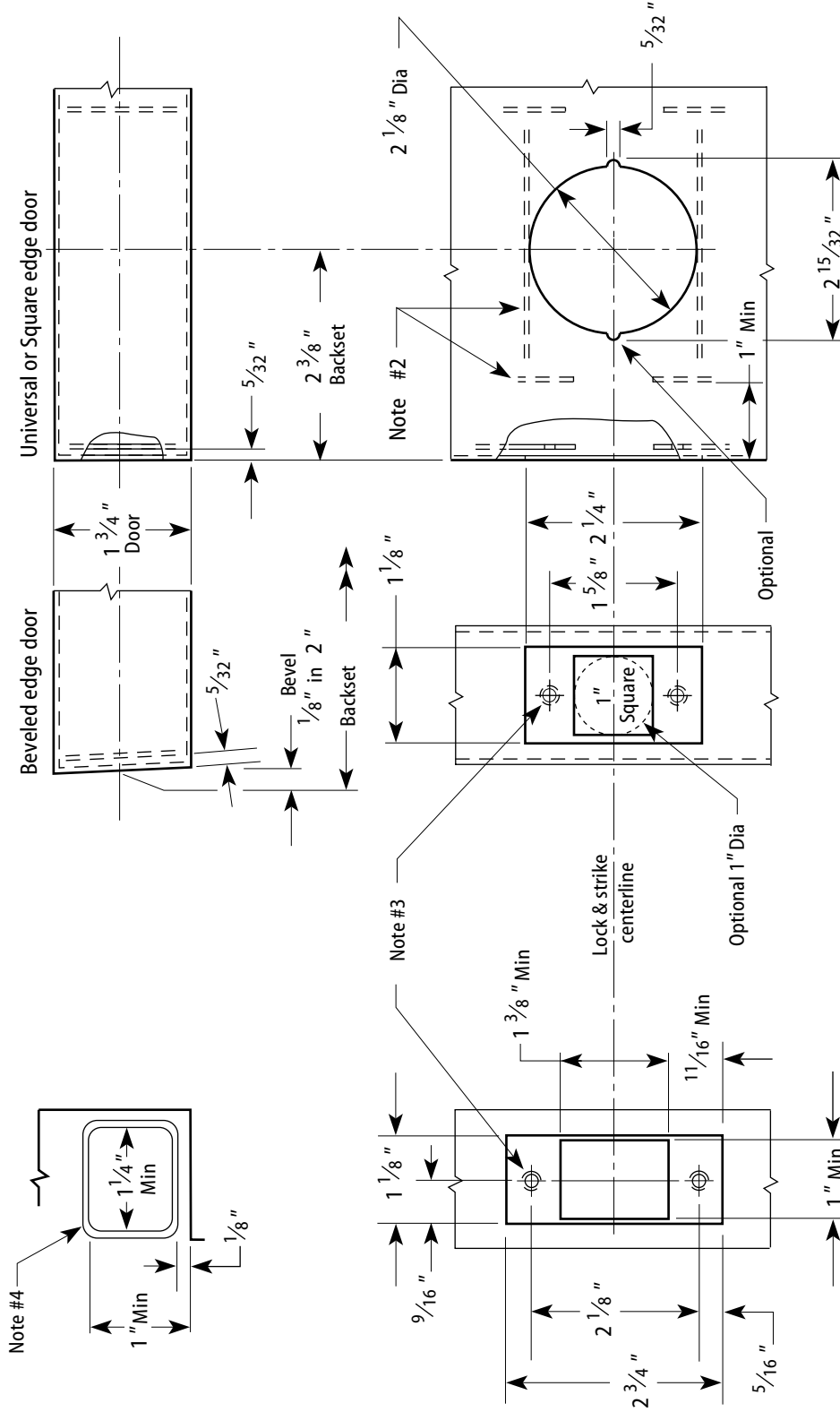


**Notes**

- 1 Allow plus tolerance for clearance per ANSI A115.2.
- 2 Lock and latch case support by door manufacturer.
- 3 Prepare for a #8-32 screw.
- 4 Plaster guard by door manufacturer.



2 3/8" Backset Door Preparation

Frame Preparation

Title <b>Installation Specifications for 82T Tubular Deadbolt Locks with Standard Strike and Wide Faceplate</b>				<b>BEST ACCESS SYSTEMS</b>		
Series 82T	Backset 2 3/8"	Latch face width 1 1/8"	Door thickness 1 3/8"-3"	Rev date 09/2000	Template number <b>T06</b>	Rev -