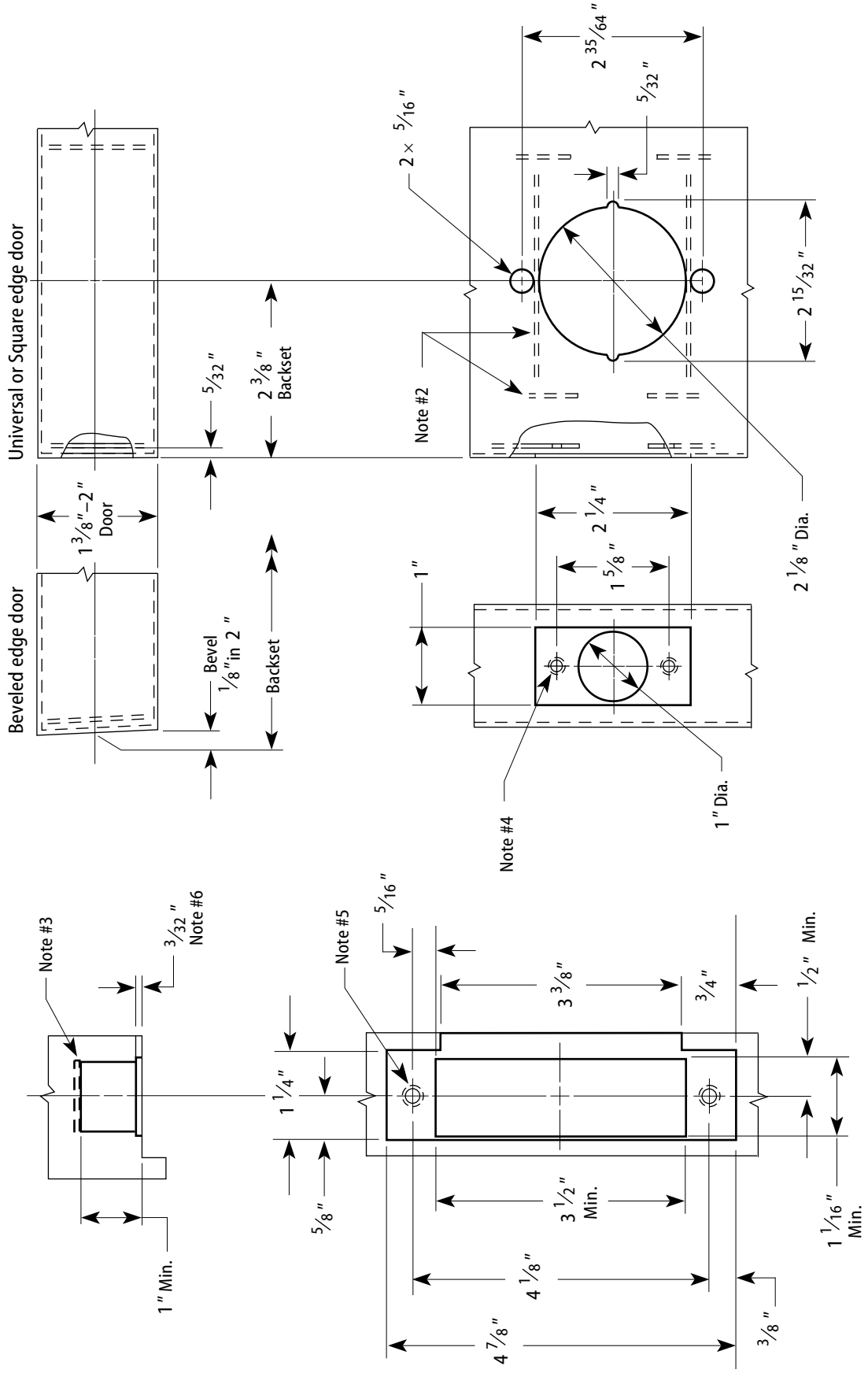


Notes

- 1 Allow plus tolerance for clearance per ANSI A115.2.
- 2 Lock and latch case support by door manufacturer.
- 3 Plaster guard by door manufacturer
- 4 Prepare for a #8-32 screw.
- 5 Prepare for a #12-24 screw.
- 6 When a strike box is used, 9/64".



Frame Preparation

2 3/8" Backset Door Preparation

Title Door & Frame Specification for 72KC Cylindrical Locks				BEST ACCESS SYSTEMS		
Series 72KC	Backset 2 3/8"	Strike Large ANSI strike (S3)	Door thickness 1 3/8 - 2"	Rev date 11/2002	Template number K23	Rev -