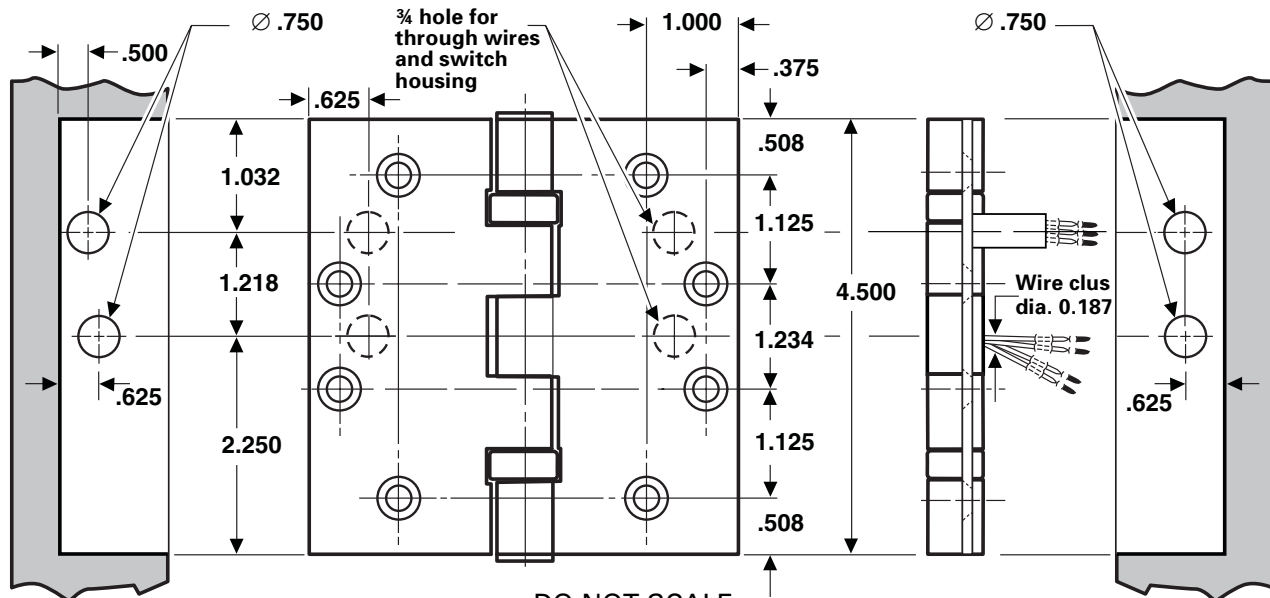


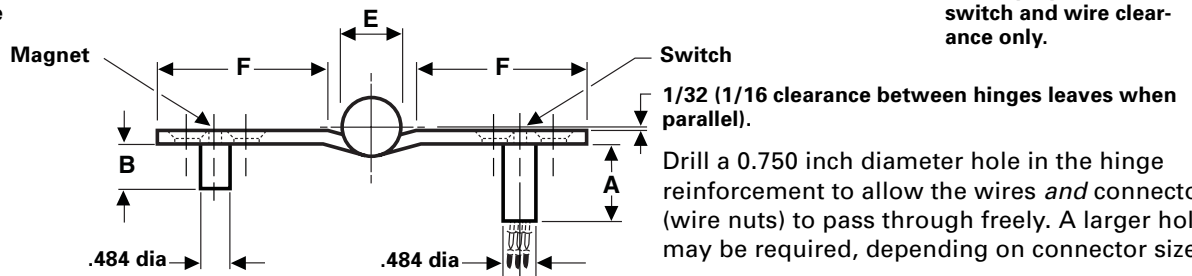
FULL MORTISE TEMPLATE BUTT HINGES WITH CONCEALED WIRES AND CONCEALED SWITCH

Sizes: 4½ × 4 and 4½ × 4½"



Door preparation for magnet and wire clearance only.

Frame preparation for switch and wire clearance only.



This view shows CS construction only.

Drill a 0.750 inch diameter hole in the hinge reinforcement to allow the wires *and* connectors (wire nuts) to pass through freely. A larger hole may be required, depending on connector size.

De-burr both faces of the hole and prime to help avoid damaging wire insulation.

Switches mount in jamb leaf. Arrangement is for R.H. door shown. Specify the hand of door when ordering.

Use a JB-2R Junction Box. See template T90-38R.

NOTES:

- 1 It is suggested that the hinge be mounted in the center or lower position on the door, rather than the top.
- 2 For reference, see template for JB-2R Junction Box (T90-38R).

Suffix	Number of Wires	Wire Gage
-54	4 wire	28 AWG
-56	6 wire	28 AWG
-66	6 wire	2 ea 24 AWG 4 ea 28 AWG
-18	8 wire	2 ea 18 AWG 6 ea 28 AWG
-58	8 wire	28 AWG
-10	10 wire	28 AWG

Notes: FBB168 & FBB199 are not available with the -66 suffix  
The -18 suffix is available only in 5 Knuckle CB design

CE hinges are available in the following configurations.

CLASS NUMBER		Gauge of Metal	(E) Outside Diameter	DISTANCE FROM EDGE OF LEAF TO SWAGE LINE (F)		A	B
Steel Hinges	Nonferrous Hinges			4½ × 4	4½ × 4½		
CECSCB179	CECSCB191	0.134	0.625	1 5/8	1 25/32	1.234	0.875
CECSFBB179	CECSFBB191	0.134	0.625	1 5/8	1 25/32	1.234	0.875
CECSCB168	CECSCB199	0.180	0.698	1 15/32	1 23/32	1.187	0.828
CECSFBB168	CECSFBB199	0.180	0.698	1 15/32	1 23/32	1.187	0.828

Machine Screw Size — ½ × 12-24 F.H.

Wood Screw Size — 1¼ × No. 12 F.H.