

INSTALLATION INSTRUCTIONS

SURFACE VERTICAL ROD DEVICE - NON-HANDED SERIES 200, FL200, 200LBR & FL200LBR

1 DOOR PREPARATION

1. Circle the **TRIM NUMBER** (if specified) at various locations (holes B and C) on the **TRIM TEMPLATE**.
2. Mark **HORIZONTAL CENTERLINE** on inside face of door 39-15/16" from finished floor as shown. (Continue horizontal centerline to outside face of door if Trim is specified).
3. Mark **VERTICAL CENTERLINE** per **BACKSET** indicated at lock side on full height of door and carry it onto the under side of the **DOOR STOP**. (If trim is specified mark vertical centerline at lock side using Backset dimension on outside face of door).

CAUTION: Vertical centerlines on both sides of the door should be the same dimension from the edge of the door.

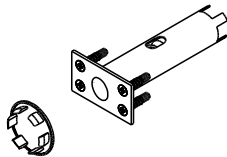
4. Mark vertical centerline on hinge side using dimension 'Y' for door opening. To determine dimension 'Y' see **(STEP 2)**
5. Tape **LOCK STILE CASE, HINGE STILE CASE, TOP LATCH** and **BOTTOM LATCH** template (and trim template if is Trim specified) as shown so that centerlines on the template line up with centerlines on door. Mark centers and drill the required holes as indicated on the templates.

FIRE EXIT DEVICES SERIES FL200 & FL200LBR

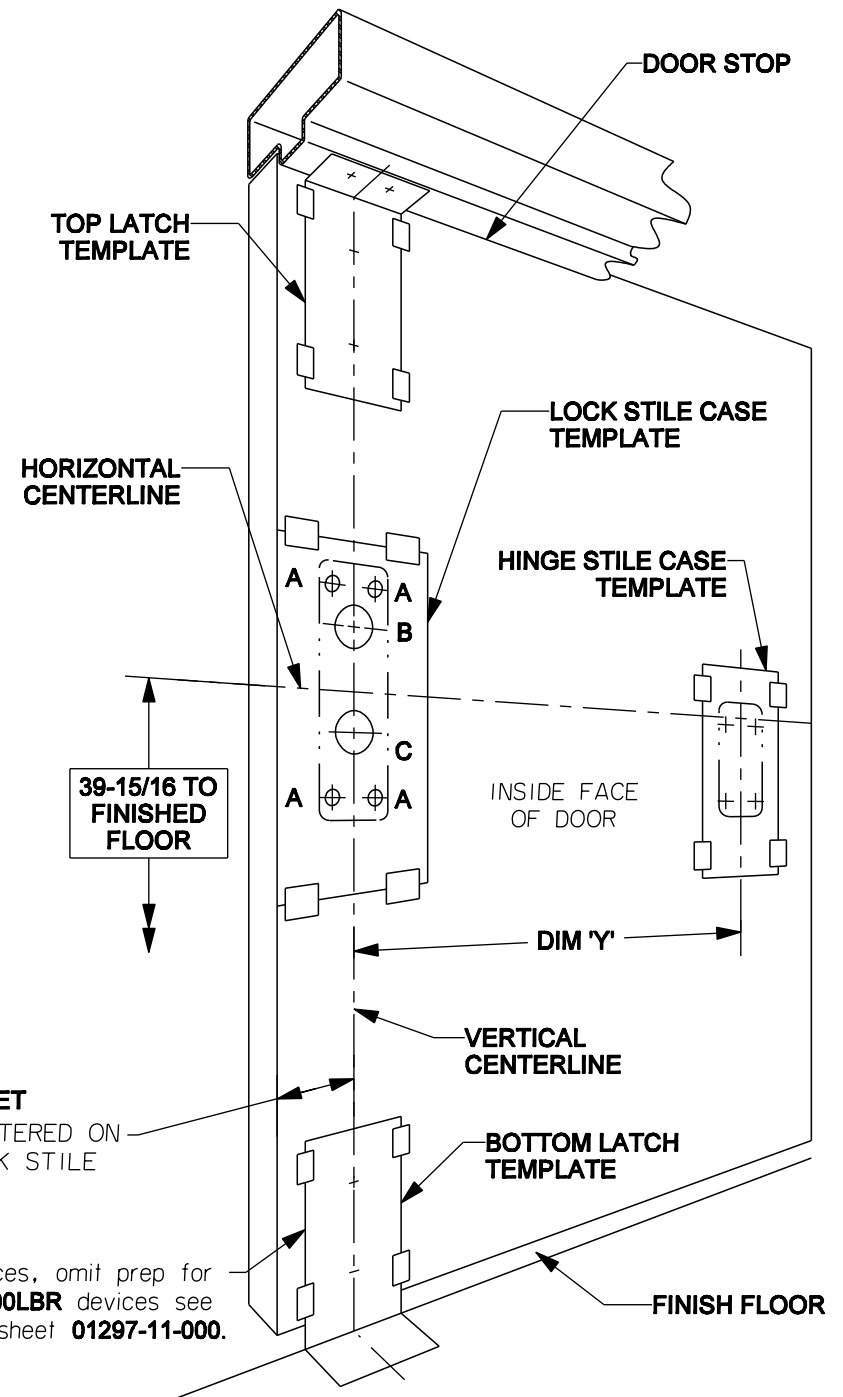
Sex bolts or through bolts are required for composite (Wood, Plastic and Steel covered), wood core, sheet metal and hollow metal doors without reinforcement unless door manufacturer has an alternate mounting method. Fire doors with steel reinforcement, mount devices with machine screws

NOTE:

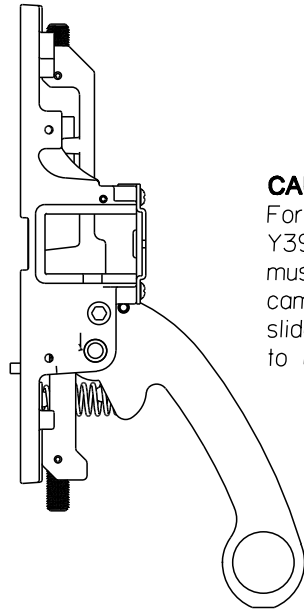
Fire bolt must be used for FL200LBR Devices.



CAUTION: For **LBR** devices, omit prep for bottom latch. For **FL200LBR** devices see fire bolt installation sheet **01297-11-000**.

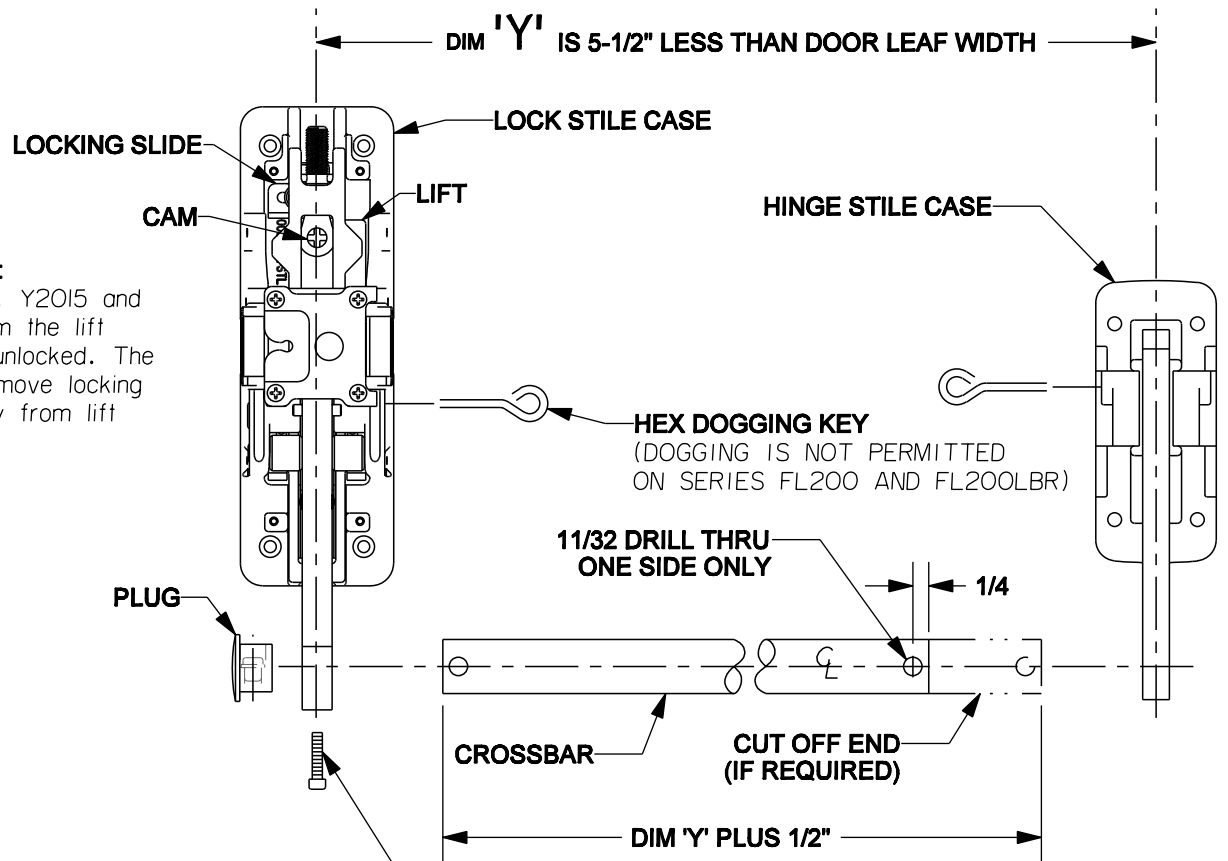


2 APPLY DEVICE



CAUTION:

For Y1715, Y2015 and Y3914 trim the lift must be unlocked. The cam will move locking slide away from lift to unlock.



NOTE: If Trim is specified: See the Trim installation instructions packed with the trim.

1. Lock Stile Case Mounting - Undog (when applicable) and remove cover

DEVICE WITH TRIM - See Trim instructions

CYLINDER ONLY - Install cylinder with cylinder backplate as shown. Make sure the tailpiece is extending 1/2" to 7/8" from the inside face of door.

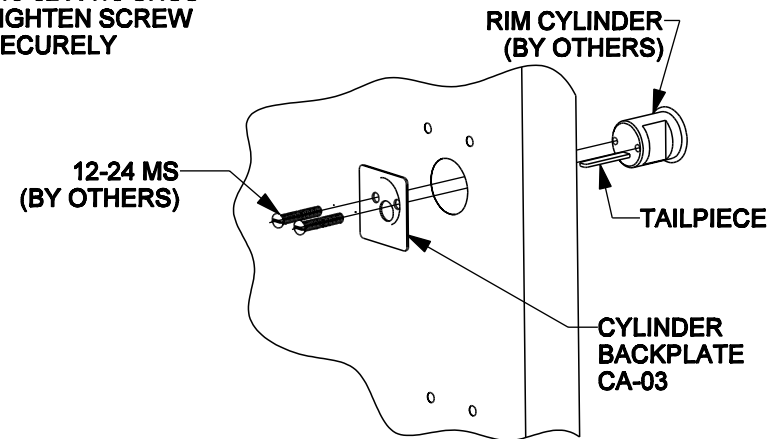
Insert tailpiece into **CAM** in the lock stile case and mount it to the door with 4 screws.

EXIT ONLY - Mount Lock Stile Case to the door with 4 screws.

2. Hinge Stile Case mounting - Undog (when applicable), remove cover and mount it with 4 screws.

3. Check CROSSBAR length per illustration. Cut CROSSBAR if required and install per illustration. Make sure screws are tightly secured.

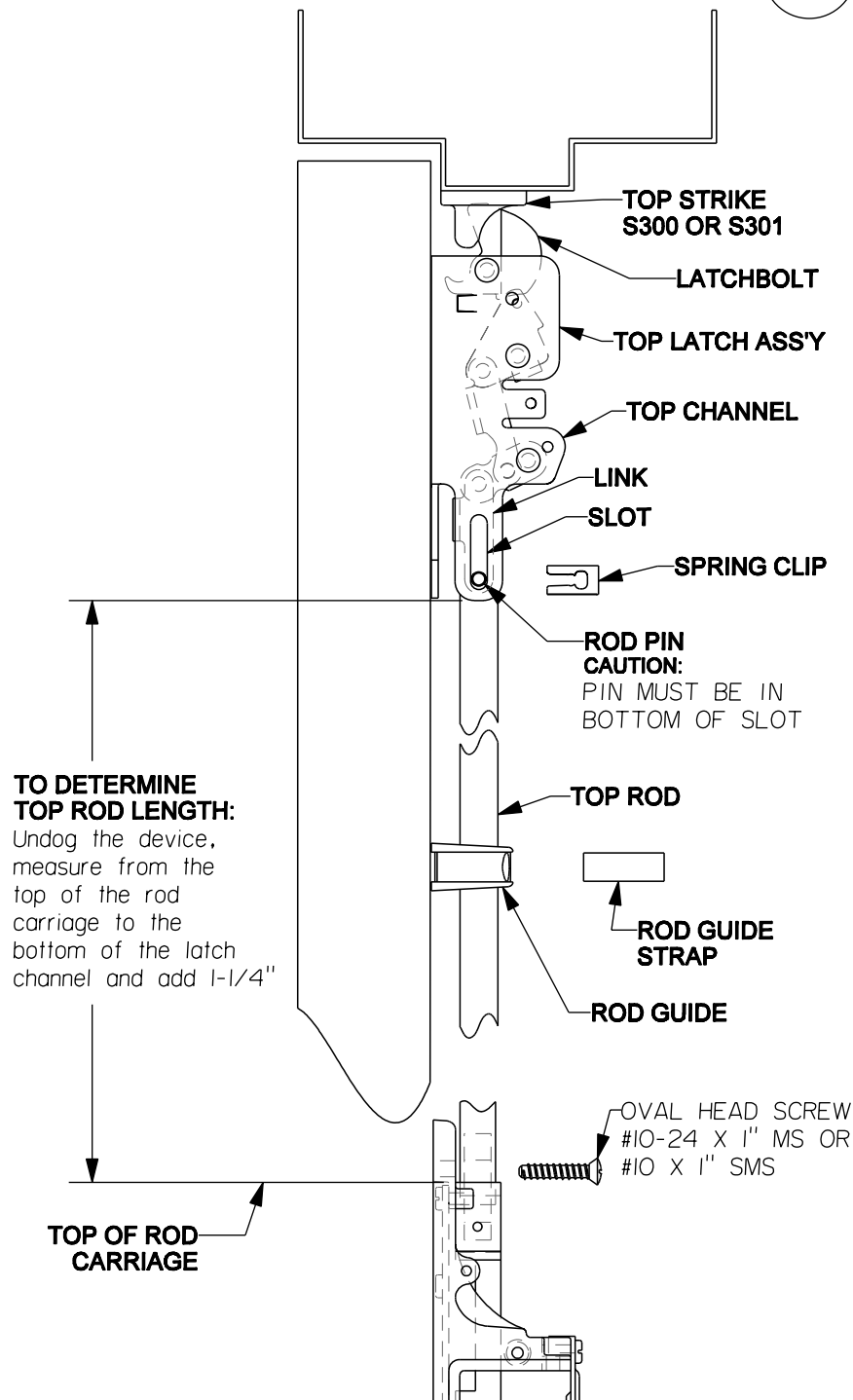
#10-32 X 7/8 SHCS
TIGHTEN SCREW
SECURELY



CYLINDER ONLY INSTALLATION

3

APPLY LATCHES AND RODS



1. Mount top latch assembly with (2) 10-24 x 1/2" MS or #10 x 1" SMS pan head screws.
2. Fasten top strike to frame with (2) 1/4-20 X 3/4" MS or #14 X 1" SMS screws and star washers. Adjust strike so that device latches without binding. Strike shims are provided if an excessive gap is apparent between latchbolt and strike. Apply third screw in center hole of strike once adjustment is complete.
3. Determine rod lengths as shown. Cut rod if necessary: Cut end of rod with holes; NOT THE THREADED END. Drill 3/16 diameter hole thru rod. **See ILLUSTRATION 1.**
4. With rod carriage down, thread top rod onto stud in rod carriage until hole in top rod aligns with bottom of slot in top channel. Pull link down so the hole in the link is at the bottom of the slot in the channel. Insert rod pin thru channel, link and rod. Push spring clip onto rod pin until it snaps into place.
 - A. Pushing on crossbar will retract the latchbolt and open the door. Latchbolt will stay retracted and device is in **HOLDBACK**.
 - B. If no holdback:
Remove spring clip and rod pin. Turn rod counter clockwise one half turn, insert rod pin and check holdback. Repeat if necessary.
 - C. When device is in the holdback, extend latchbolt by rotating it. Fully extended latchbolt should be in deadlock. **DEADLOCKED** Latchbolt can not be pushed down into the latch channel.
 - D. If no deadlock:
Remove rod pin. Turn rod clockwise one half turn, insert rod pin and check deadlock. Repeat if necessary and install spring clip.
5. For "LBR" devices attach latch and lock stile case covers.
6. Mount bottom channel with (2) 1/4-20 X 3/4" MS or #14 X 1" SMS pan head screws.
7. With the rod carriage down, thread the bottom rod onto the stud in the rod carriage until the appropriate hole (see **ILLUSTRATION 1** below) in the rod aligns with

BOTTOM OF ROD CARRIAGE

TO DETERMINE TOP ROD LENGTH:

Undog the device, measure from the bottom of the rod carriage to the top of the latch channel and add 1-1/2"

BOTTOM ROD

ROD GUIDE STRAP

ROD GUIDE

SLOT

ROD PIN CAUTION:
PIN MUST BE IN BOTTOM OF SLOT

SPRING CLIP

BOTTOM CHANNEL

BOLT

BOTTOM STRIKE S460

FINISHED FLOOR

3/4" BOLT CLEARANCE

bottom of slot in the bottom channel, insert rod into the bolt by lifting it up. Insert rod pin thru channel, bolt and then rod.

8. Place device in holdback by pushing on crossbar. Clearance between the bottom of the bolt and the surface where strike will be mounted should be **1/4"**
If clearance is not **1/4"**, remove rod pin and thread rod into the rod carriage to achieve **1/4"** clearance. Install rod pin and spring clip.
- 9A. **FOR FLOOR APPLICATION:** Center strike around bolt. Mark floor for fasteners, prepare floor according to the type of fastener furnished. Provide clearance in floor for bolt.
- 9B. **FOR THRESHOLD APPLICATION:** Center strike around bolt. Provide hole in threshold to accept the bolt. Mark threshold for fasteners. Prepare the threshold according to type of fasteners furnished.
10. Position rod guides midway between latches and lock stile case, centered on rods. Mark, drill and fasten guides with (2) #10-24 X 1-1/2" MS or #10 X 1-1/2" SMS screws. Snap rod guide straps into position.
11. Attach all covers with screws.

ILLUSTRATION 1

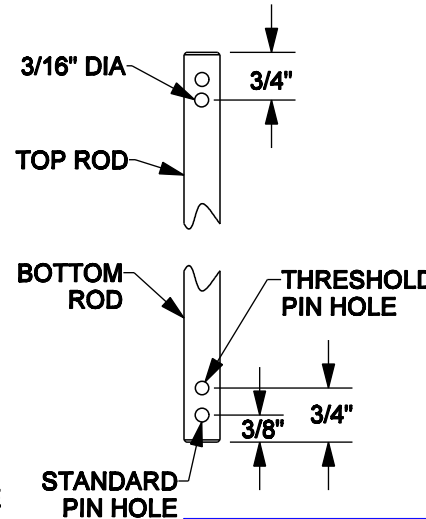
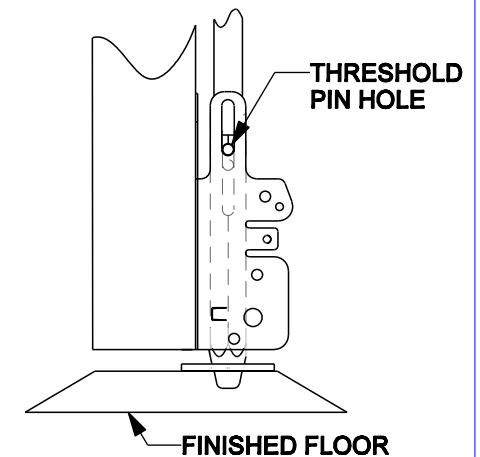
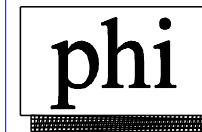


ILLUSTRATION 2 THRESHOLD APPLICATION



BOTTOM STRIKE SCREWS/ANCHORS	QTY.
1/4-20 X 1/2", FLAT HEAD MS	2
1/4-14 X 1", FLAT HEAD SMS	2
ANCHOR, PLASTIC PLUG	2
DROP-IN ANCHOR, 1/4-20	2



DRWG 01818-11-000 DATE 5/1/03 REVISION A
Precision Hardware, Inc.
 P.O. Box 74040, Romulus, MI 48174-0040
 www.precisionhardware.com