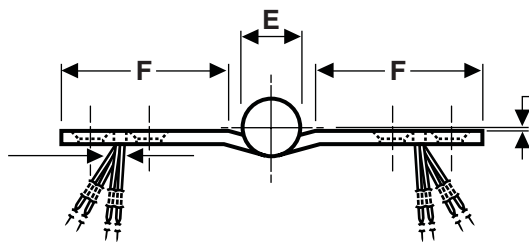
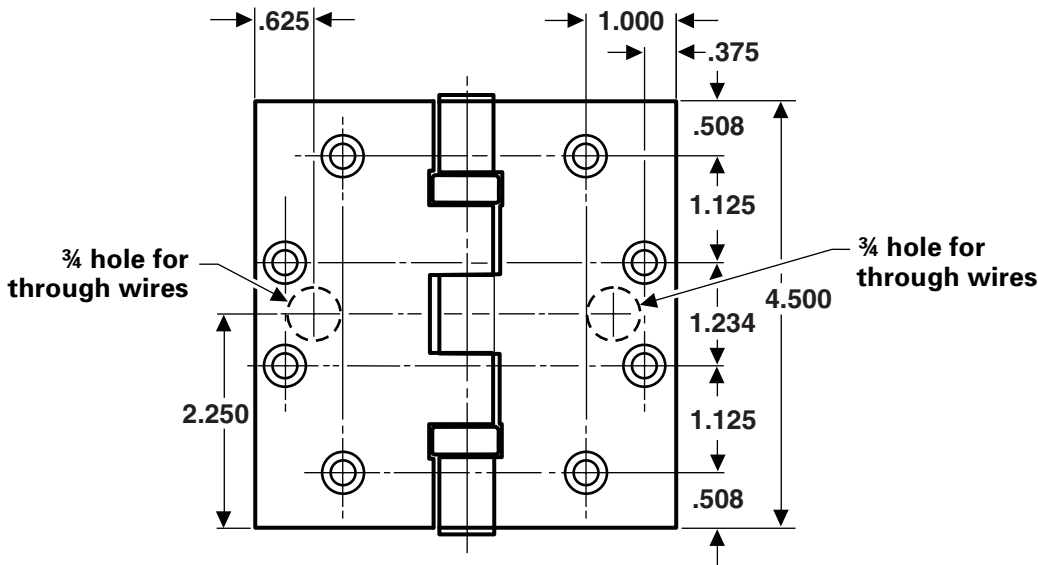


FULL MORTISE TEMPLATE BUTT HINGES WITH CONCEALED WIRES

Sizes: 4½ × 4 and 4½ × 4½"



DO NOT SCALE

1/32 (1/16 clearance between hinge leaves when parallel).

Drill a 0.750 inch diameter hole in the hinge reinforcement to allow the wires and connectors (wire nuts) to pass through freely. A larger hole may be required, depending on connector size.

De-burr both faces of the hole and prime to help avoid damaging wire insulation.

Use a JB-2R Junction Box. See template T90-38R.

NOTE:

Available with both concealed wires and a concealed switch. See template No. T45-19.

Suffix	Number of Wires	Wire Gage
-54	4 wire	28 AWG
-56	6 wire	28 AWG
-66	6 wire	2 ea 24 AWG 4 ea 28 AWG
-18	8 wire	2 ea 18 AWG 6 ea 28 AWG
-58	8 wire	28 AWG
-10	10 wire	28 AWG

Notes: FBB168 & FBB199 are not available with the -66 suffix
The -18 suffix is available only in 5 knuckle CB design

CE hinges are available in the following configurations:

CLASS NUMBER		Gauge of Metal	(E) Outside Diameter	DISTANCE FROM EDGE OF LEAF TO SWAGE LINE (F)	
Steel Hinges	Nonferrous Hinges			4½ × 4	4½ × 4½
CECB179	CECB191	0.134	0.625	1 5/8	1 25/32
CEFBB179	CEFBB191	0.134	0.625	1 5/8	1 25/32
CECB168	CECB199	0.180	0.698	1 15/32	1 23/32
CEFBB168	CEFBB199	0.180	0.698	1 15/32	1 23/32
CEIHTCB168	CEIHTCB199	0.180	0.698	1 15/32	1 23/32

Machine Screw Size — ½ × 12-24 F.H.
Wood Screw Size — 1¼ × No. 12 F.H.