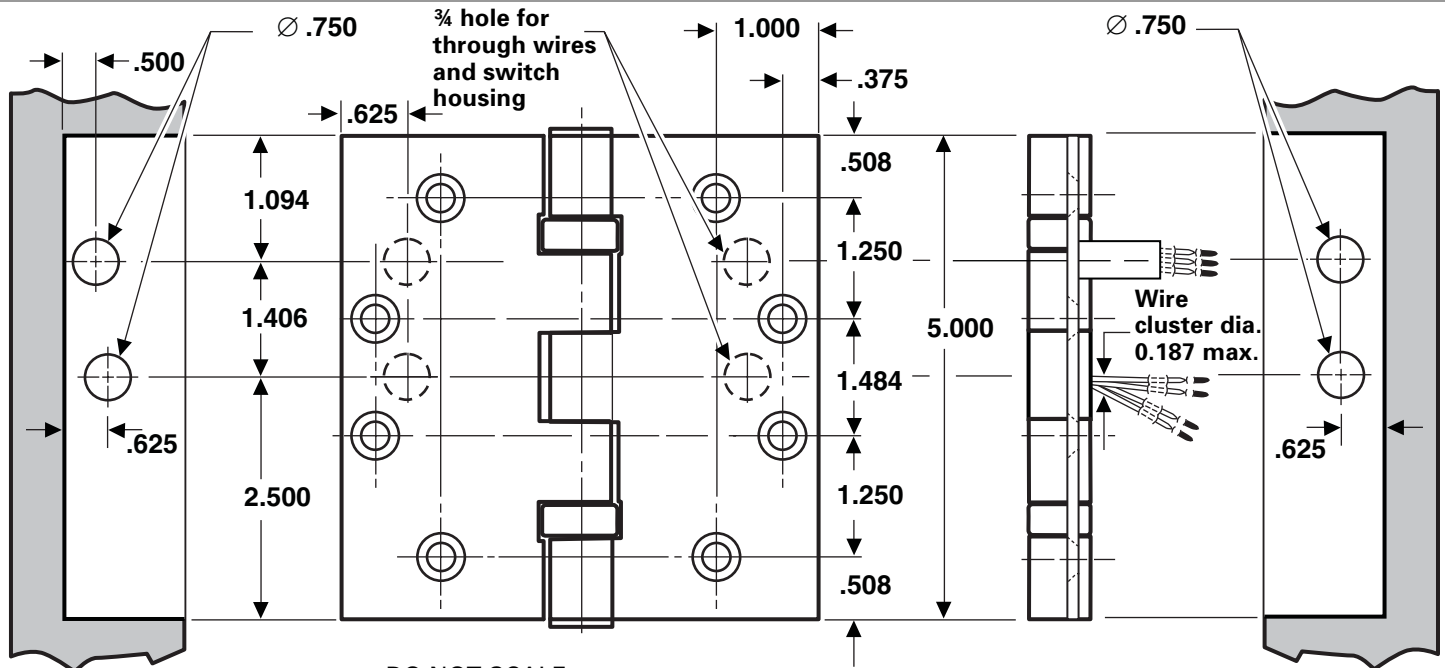


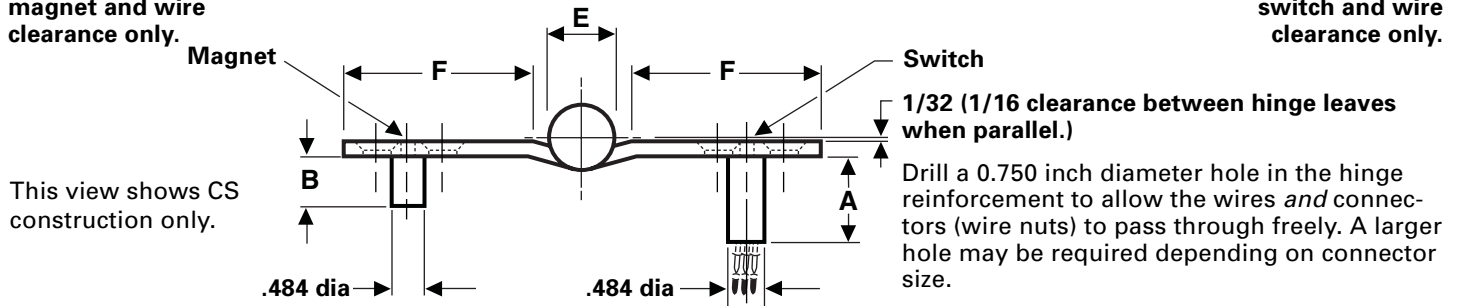
FULL MORTISE TEMPLATE BUTT HINGES WITH CONCEALED WIRES AND CONCEALED SWITCH

Size: 5 x 4 1/2"



Door preparation for magnet and wire clearance only.

Frame preparation for switch and wire clearance only.



This view shows CS construction only.

Suffix	Number of Wires	Wire Gage
-54	4 wire	28 AWG
-56	6 wire	28 AWG
-66	6 wire	2 ea 24 AWG 4 ea 28 AWG
-58	8 wire	28 AWG
-10	10 wire	28 AWG
-18	8 wire	2 ea 18 AWG 6 ea 28 AWG

Notes: FBB168 & FBB199 are not available with the -66 suffix  
-18 Available only in 5 Knuckle CB Design

CE hinges are available in the following configurations:

CLASS NUMBER		Gauge of Metal	(E) Outside Diameter	DISTANCE FROM EDGE OF LEAF TO SWAGE LINE (F)	A	B
Steel Hinges	Nonferrous Hinges					
CECSCB179	CECSCB191	0.146	0.669	1 13/16	1.218	0.859
CECSFBB179	CECSFBB191	0.146	0.669	1 13/16	1.218	0.859
CECSCB168	CECSCB199	0.190	0.748	1 23/32	1.172	0.812
CECSFBB168	CECSFBB199	0.190	0.748	1 23/32	1.172	0.812

Machine Screw Size — 1/2 x 12-24 F.H.

Wood Screw Size — [ 1 1/4 x No. 12 F.H. for standard weight (0.146) hinges  
1 1/2 x No. 12 F.H. for heavy weight (0.190) hinges ]

1/32 (1/16 clearance between hinge leaves when parallel.)  
Drill a 0.750 inch diameter hole in the hinge reinforcement to allow the wires and connectors (wire nuts) to pass through freely. A larger hole may be required depending on connector size.

De-burr both faces of the hole and prime to help avoid damaging wire insulation.

Switches mount in jamb leaf. Arrangement for R.H. door shown. Specify the hand of door when ordering.

NOTES:

- 1 It is suggested that the hinge be mounted in the center or lower position on the door, rather than the top.
- 2 Use JB-2R Junction Box. See template T90-38R.