

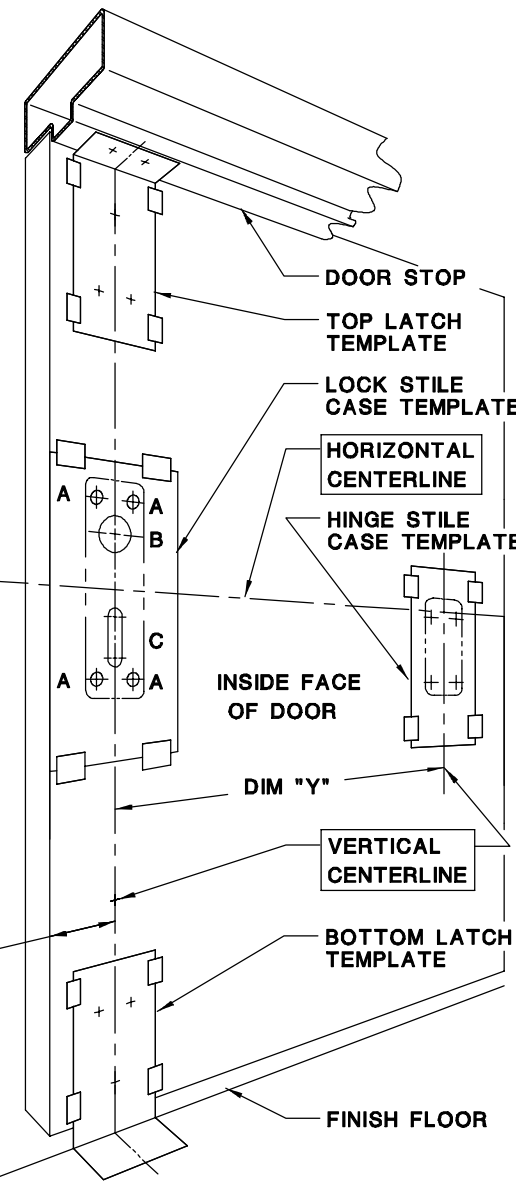
INSTALLATION INSTRUCTIONS

REVERSIBLE - VERTICAL ROD EXIT DEVICES

SERIES 200, FL-200, 200-LBR, FL-200-LBR

1 DOOR PREPARATION

BACKSET SCHEDULE		
TYPE OF INSTALLATION	BACKSET	LOCK STILE WIDTH
VERTICAL ROD DEVICE & MORTISE DEVICE	2-3/4"	4-1/4"
TWO VERTICAL ROD DEVICES	2-3/4"	4-1/4" MIN
	1-1/2" MIN	3" MIN
SINGLE DOOR	2-3/4"	4-1/4" MIN
	2" MIN.	3-1/2" MIN

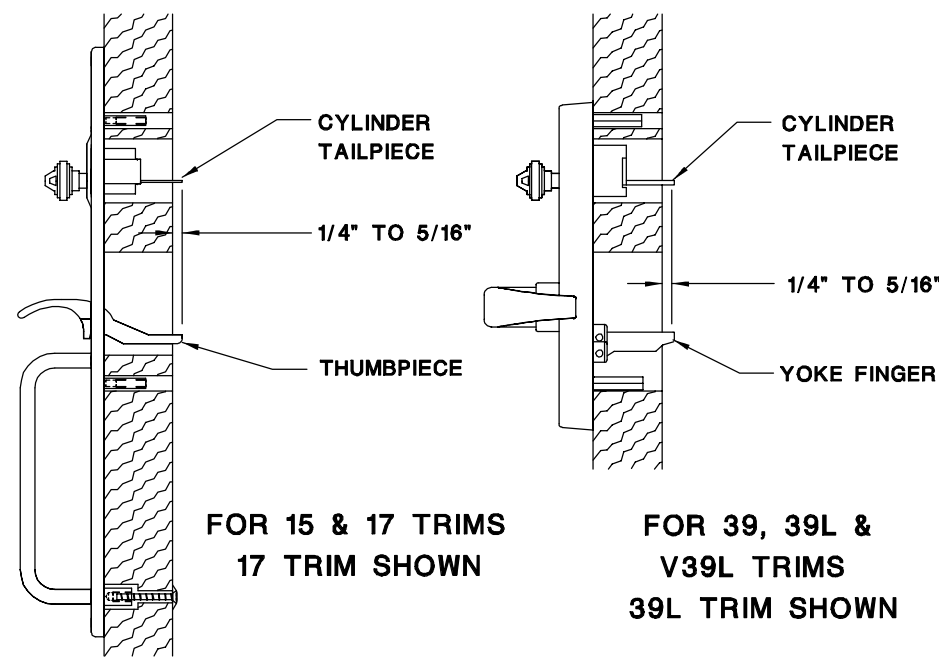


-CAUTION-
FOR LESS BOTTOM ROD DEVICES, OMIT PREP FOR BOTTOM LATCH AND BOTTOM STRIKE. SEE INSTALLATION INSTRUCTION SHEET AI-LBR-1

HOLE DRILLING SCHEDULE			
GROUP	DEVICE NUMBER	B	C
1	201, FL-201 202, FL-202	NO	NO
2	203, FL-203	YES	NO
3	205, FL-205 208, FL-208	YES	YES
4	205A, FL-205A 208A, FL-208A	NO	YES

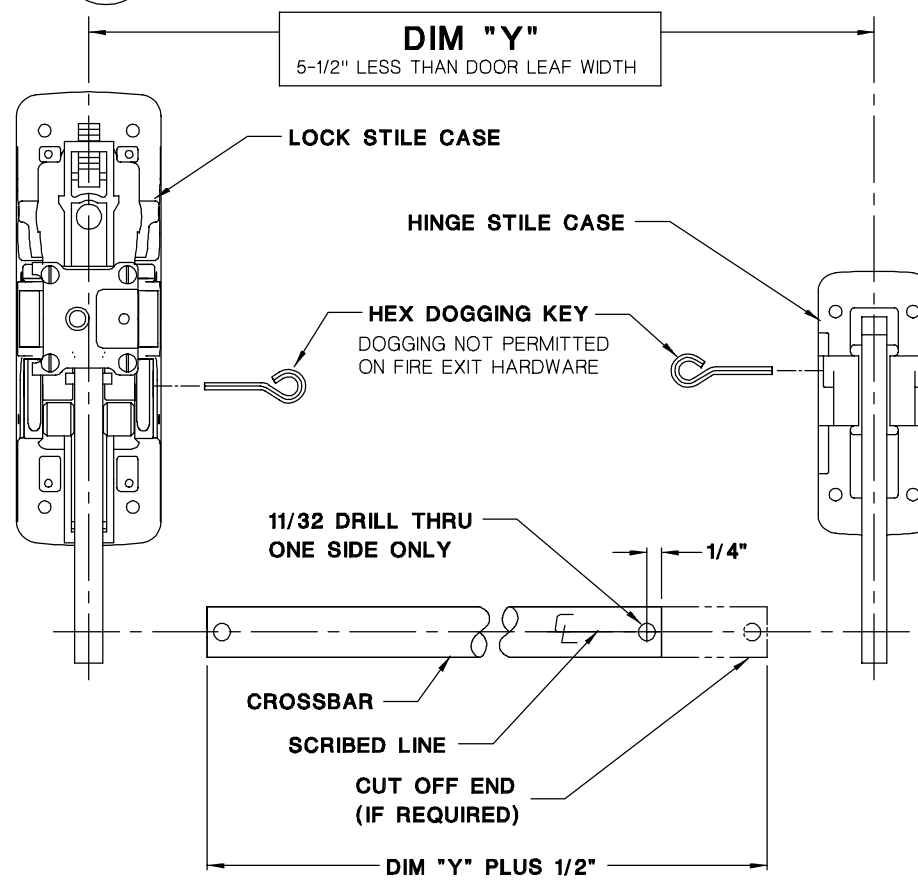
- Circle the following:
 - Backset in the **BACKSET SCHEDULE**.
 - DEVICE NO.** and **GROUP NO.** in '**HOLE DRILLING SCHEDULE**'.
- Mark horizontal centerline on inside face of door 39-15/16" from finish floor as shown (Continue horizontal centerline to outside face of door if Trim is specified).
- Mark vertical centerline per **BACKSET SCHEDULE** at lock side on full height of door and carry it over on under side of door stop. (Mark vertical centerline at lock side using Backset dimension on outside face of door if Trim is specified).
CAUTION: Vertical centerlines on both sides of the door should be the same dimension from the edge of the door.
- Mark vertical centerline hinge side using dimension "Y" for door opening. To determine dimension "Y" see **STEP 3**.
- Tape Lock and Hinge Stile Case, Top Latch and Bottom Latch Templates (and Trim Template if Trim specified) as shown so that centerlines on template line up with centerlines on door.
- Mark centers for all mounting holes required per the '**HOLE DRILLING SCHEDULE**' and Trim Template if Trim specified).
- Drill holes in the door and door stop as directed on templates.
- For 203 Device less Trim install cylinder with Cylinder Back Plate. Tailpiece length should be 1/4" to 5/16" (**SEE STEP 2**) from inside face of the door.

2 APPLY TRIM - WHEN SPECIFIED



- If no trim is specified, proceed with **STEP 3**.
- For Devices in **GROUP 2 & 3**, install cylinder in the Trim. Install the Trim into the door and check length of cylinder tailpiece as shown.
- For Devices in **GROUP 3 & 4**, check length of **THUMBPIECE** or **YOKE FINGER**.

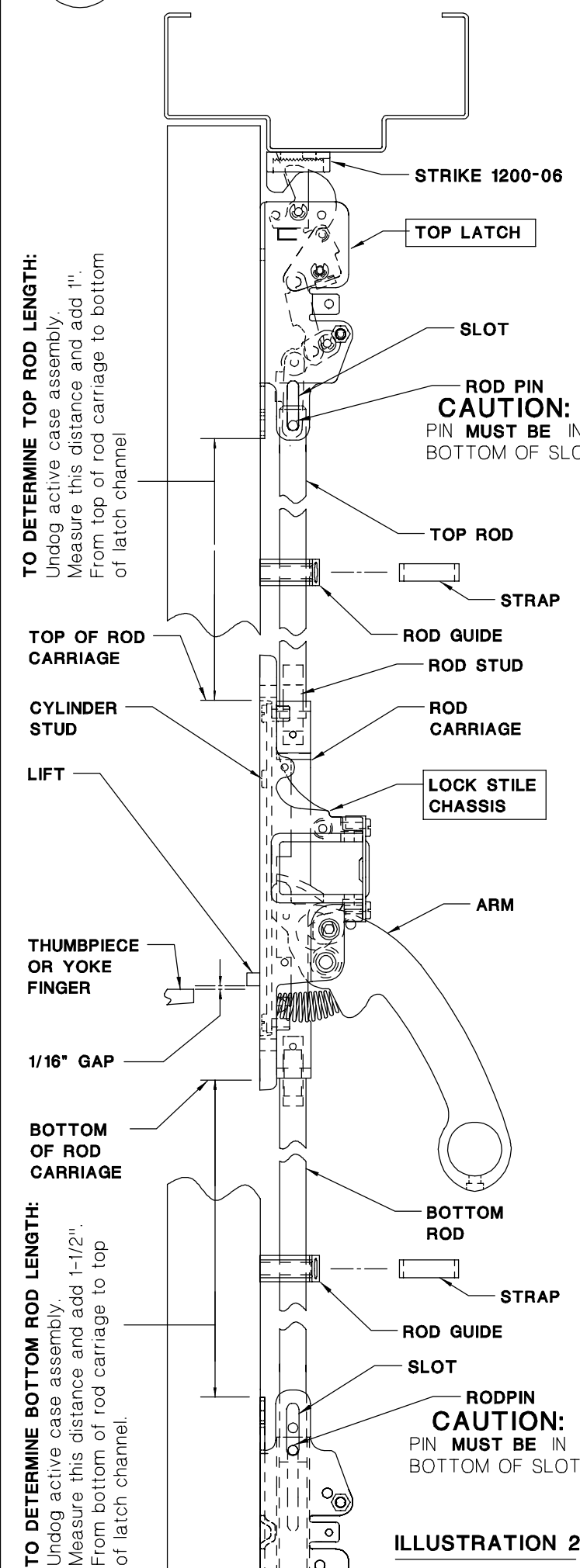
3 APPLY DEVICE



- Lock stile case installation - Undog chassis (when applicable) and remove cover. Mount lock stile case chassis with 4 screws. For devices with outside functions, follow A & B below.
 - For devices in **GROUP 2 & 3** insert cylinder tailpiece in to **CYLINDER STUD** in lock stile chassis. (**SEE LOCK STILE CHASSIS IN STEP 4**).
 - For devices in **GROUP 3 & 4** **LIFT** appears in lock stile chassis. **LIFT** must be in locked position. **THUMBPIECE** or **YOKE FINGER** must be under the **LIFT** with 1/16" gap. (**SEE LOCK STILE CHASSIS IN STEP 4**).

CAUTION: Before proceeding further, unlock the lift for devices in **GROUP 4**.
- Hinge stile case installation - Undog chassis (when applicable) and remove cover. Mount lock stile case chassis with 4 screws.
- Check cross bar length per illustration. Cut cross bar if required, but do not install at this time.

4 APPLY LATCHES



- Mount top latch assembly with (3) 10-24 pan head screws.
- Fasten top strike to frame with 1/4-20 screws, star washers and adjust strike so that device latches without binding. Apply third center screw to strike once adjustment is complete.
- Mount bottom latch channel with (3) 10-24 pan head screws.
- Determine rod lengths as shown. Cut rod if necessary: Cut end of rod with hole; not threaded end. Drill 3/16 diameter hole thru rod. See **ILLUSTRATION 1**.
- With rod carriage down, thread top rod on to stud in rod carriage until hole in top rod aligns with bottom of slot in top channel. Pull link down so the hole in the link is at the bottom of the slot in the channel. Insert rodpin thru channel, link and rod. Center rod pin in channel. Rod pin **MUST** be at the **BOTTOM** of slot in channel.
- With rod carriage down, thread bottom rod onto stud in rod carriage until hole in rod aligns with bottom of slot in channel. Place shotbolt into bottom latch channel. Raise the bottom rod. Insert rod into shotbolt. Insert rodpin through channel slot, shotbolt and **BOTTOM** hole in rod. Center rodpin in channel. For threshold applications see step 7B.
- A. Center strike around shotbolt. Mark floor for fasteners. Prepare floor according to the type of fasteners furnished. Provide clearance in floor for shotbolt bolt and strike as shown below. **▲**
B. For threshold application - Pin shotbolt to rod using top hole in rod. See **ILLUSTRATION 2**. Provide hole in threshold to accept the shotbolt. Center strike around bolt. Mark threshold for fasteners. Prepare threshold according to type of fasteners provided.
- Position rod guides midway between latches and lock stile chassis, centered on rods. Mark, drill and fasten guides with #10 sheet metal screws, #10-24 machine screws or sex nuts. Snap rod guide straps into position.

VERIFY SETTINGS

DEADLOCK

With door closed, latchbolt should be fully extended and in deadlock. Proper deadlocking does not allow the latchbolt to be pushed down into the latch channel.

HOLDBACK

Device should be in holdback when active case arm is depressed and door is open. If device is in holdback, the latchbolt cannot be extended without rotating the latchbolt. Clearance between shotbolt and strike is 1/8" when retracted and in holdback.

DEVICES WITH DOGGING

When device is dogged down, top latch should go into holdback as door begins to open. Clearance between shotbolt and strike is 1/8" when device is dogged down.

ADJUSTMENT

If device does not go into holdback or deadlock, remove rodpin.

- **NO DEADLOCKING** - Thread top rod **IN** one half turn.
- **NO HOLDBACK** - Thread top rod **OUT** one half turn.

Replace rod pin and verify settings again. Repeat adjustments if needed.

- Attach all covers with #8-32 screws. Install crossbar. **SEE ILLUSTRATION 3**

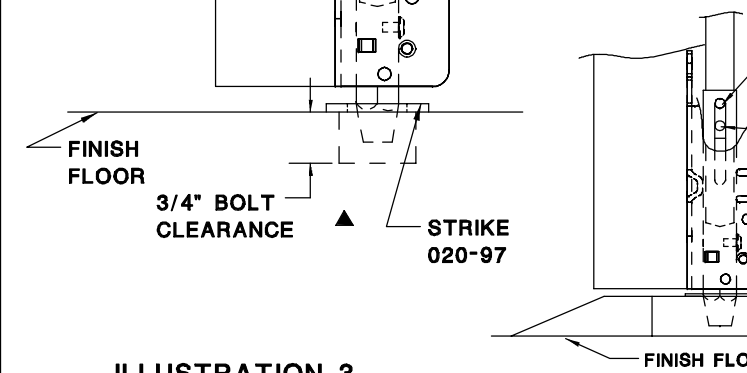


ILLUSTRATION 2

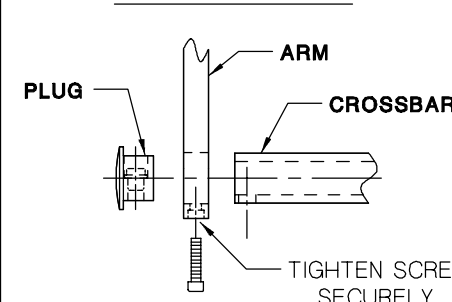


ILLUSTRATION 3

FIRE EXIT DEVICE INSTALLATION SERIES FL-200

Metal covered composite and hollow metal fire doors with reinforcements use steel machine screws.

Plastic and wood covered composite or metal covered composite and hollow metal fire doors without reinforcements sex bolts are required.

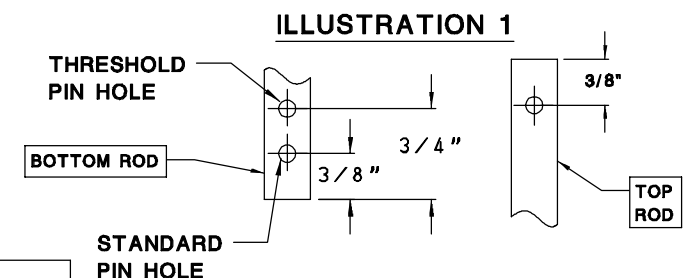


ILLUSTRATION 1

phi Precision Hardware, Inc.
P.O. Box 74040, Romulus, MI 48174-0040
Manufacturers of Panic Exit Devices and Builder's Hardware

DRAWING II - 200 DATE 04-01-01 REVISION F