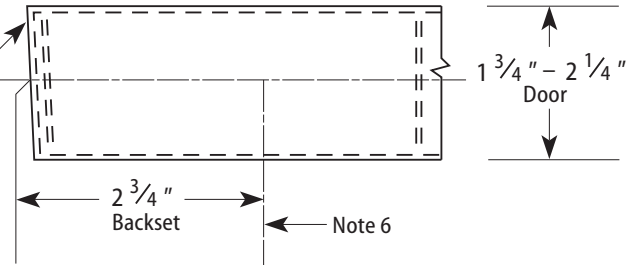


**Notes**

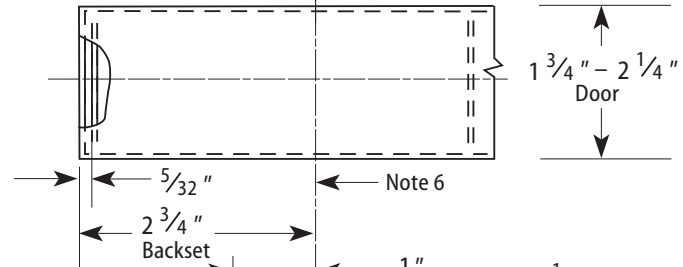
- 1 Also see the *Q05 Template—Installation Template for 93KQ Cylindrical Locks*.
- 2 Allow plus tolerance for clearance per ANSI A115.5. The general tolerance is  $\pm 1/64"$ .
- 3 The lock and latch case support are required from the door manufacturer.
- 4 The plaster guard is required from the frame manufacturer.
- 5 Prepare for a #8–32 screw.
- 6 For backsets other than  $2\ 3/4"$ , position the vertical centerline of the lock appropriately.
- 7 Drill the 1" hole  $1\ 3/4"$  deep.
- 8 Drill the 1" hole 1" deep.

Bevel angle =  $1/8"$  in  $2"$

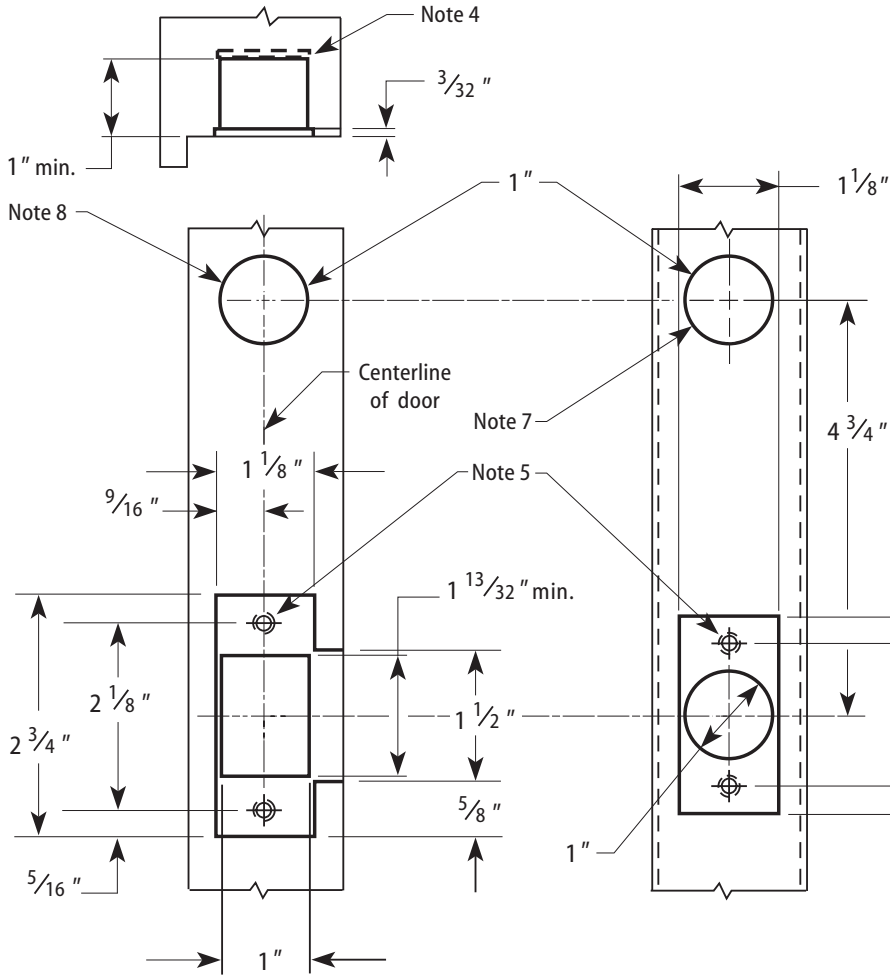
**Beveled edge door**



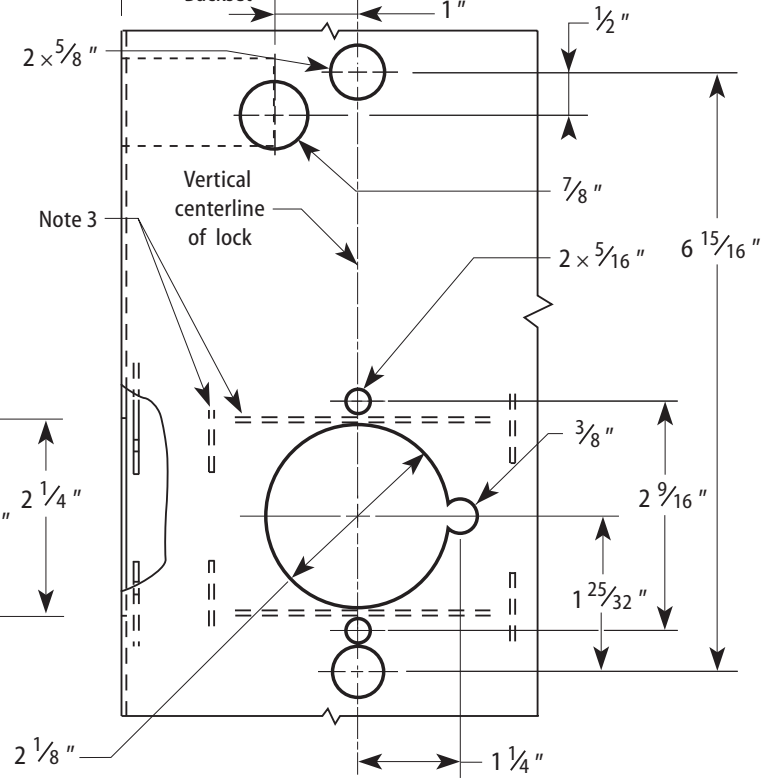
**Universal or square edge door**



**Strike box — overhead view**



**Frame preparation**



**$2\ 3/4"$  Backset door preparation**

Title Installation Specifications for 93KQ Cylindrical Locks with Small Strike

Series 93KQ

Backset  $2\ 3/4"$ ,  $3\ 3/4"$ ,  $5"$

Trim style DV, MS, PH, PM

Doorthickness  $1\ 3/4" - 2\ 1/4"$

Rev date 7/2008

Template number

Q001

Rev

A

**BEST ACCESS SYSTEMS**