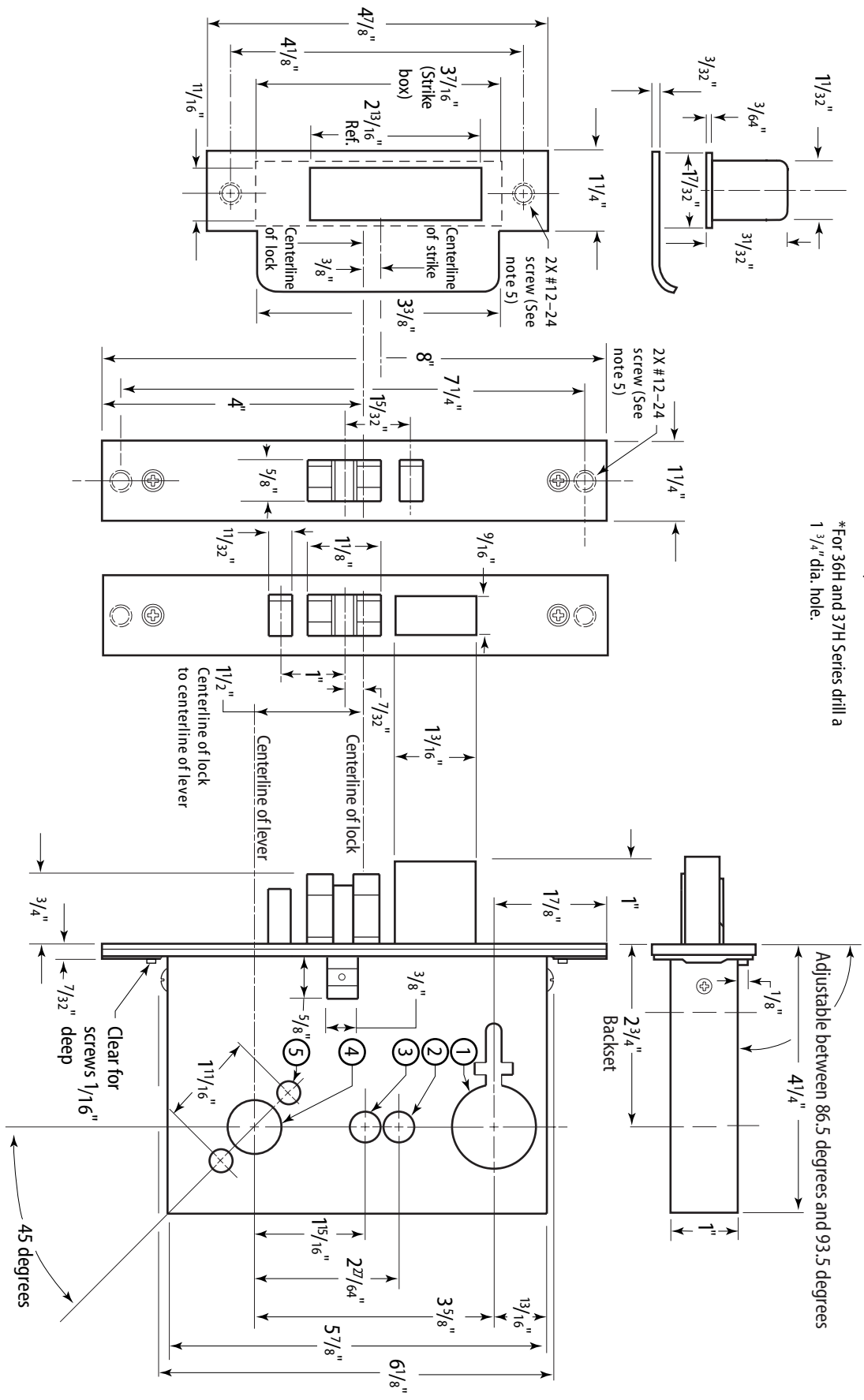


- Lock case holes:**
- ① **Cylinder hole**— $1\frac{1}{4}$ " dia. \*
  - ② **Turn knob / emergency entrance hole**— $\frac{1}{2}$ " dia.
  - ③ **Hotel indicator hole**— $\frac{1}{2}$ " dia.
  - ④ **Knob/lever hole**— $\frac{7}{8}$ " dia.
  - ⑤ **Thru-bolt holes**— $\frac{3}{8}$ " dia. (two required)
- \*For 36H and 37H Series drill a  $1\frac{3}{4}$ " dia. hole.

- Notes**
- 1 Before drilling check the hole pattern chart (H04). See also the appropriate installation template (H09, H11, H12, or H13).
  - 2 The maximum door-to-frame gap is  $\frac{3}{16}$ "
  - 3 Allow  $\frac{3}{64}$ " clearance for the strike box thickness.
  - 4 For metal doors, lock case support is required from the door manufacturer.
  - 5 Tap for a #12-24 machine screw or drill for #12 wood screw (a combination screw is supplied).
  - 6 For electrified functions (EWEU, EWEL, etc) see Template W22.



Title Installation Specifications for 34H-37H Mortise Locks		<b>BEST ACCESS SYSTEMS</b>			
Series 34H-37H	Backset 2 3/4"	Trim style A, B, C, D, H, J, M, N, S	Door thickness 1 3/4" - 5"	Rev date 06/2003	Template number <b>H03</b>
					Rev <b>P</b>