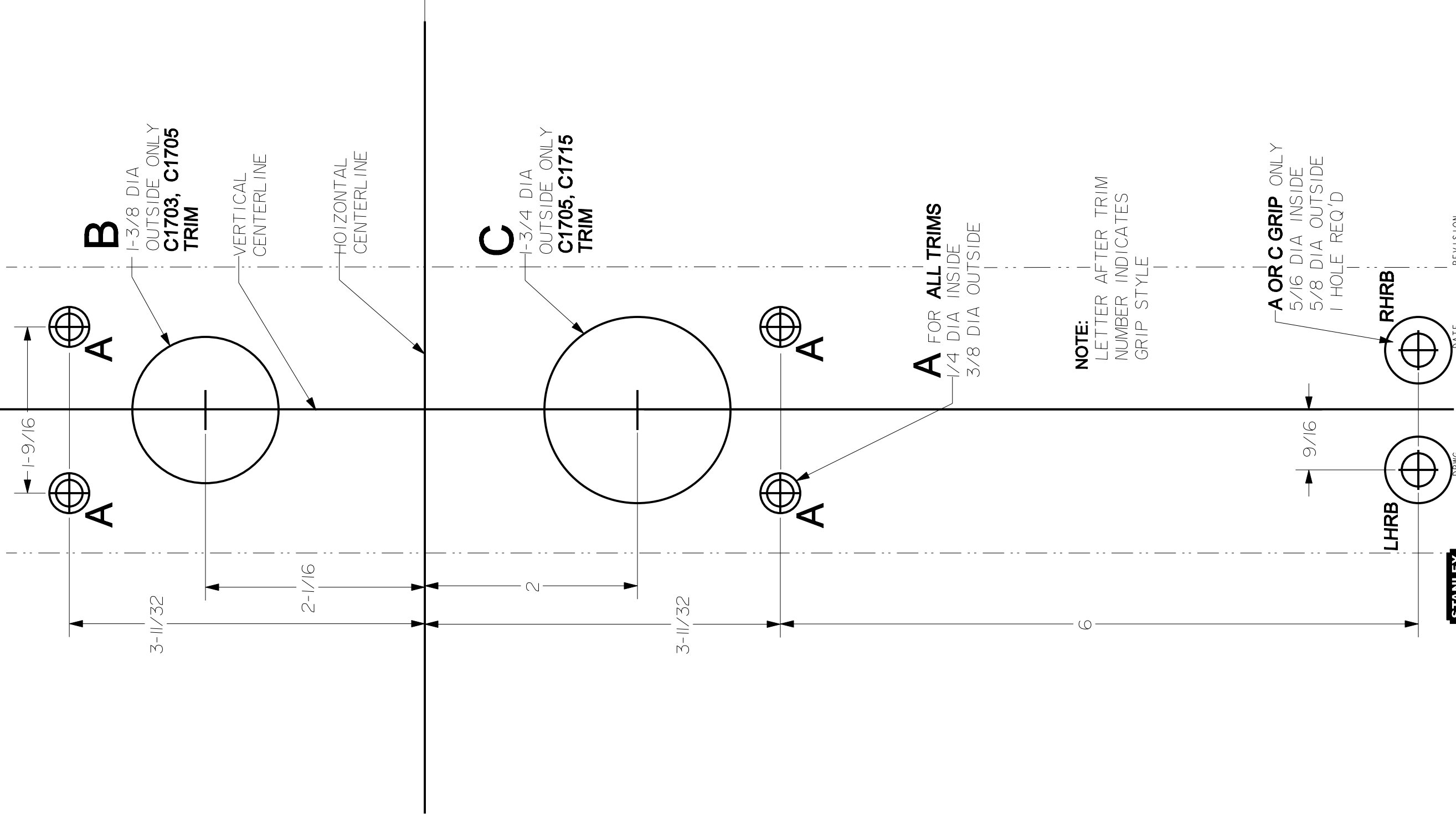


SERIES C1700 X A & C GRIP TRIM
C1702, C1703, C1705, C1715
 FOR DEVICE SEE SPECIFIC TAPE ON TEMPLATE



NOTE:
 LETTER AFTER TRIM
 NUMBER INDICATES
 GRIP STYLE

A OR C GRIP ONLY
 5/16 DIA INSIDE
 5/8 DIA OUTSIDE
 1 HOLE REQ'D

STANLEY **phi** 01798-11-000 5/01/05 **B**

Precision Hardware
 a Division of Stanley Security Solutions, Inc.
 www.stanleysecuritysolutions.com

TEMPLATE MUST BE TO SCALE