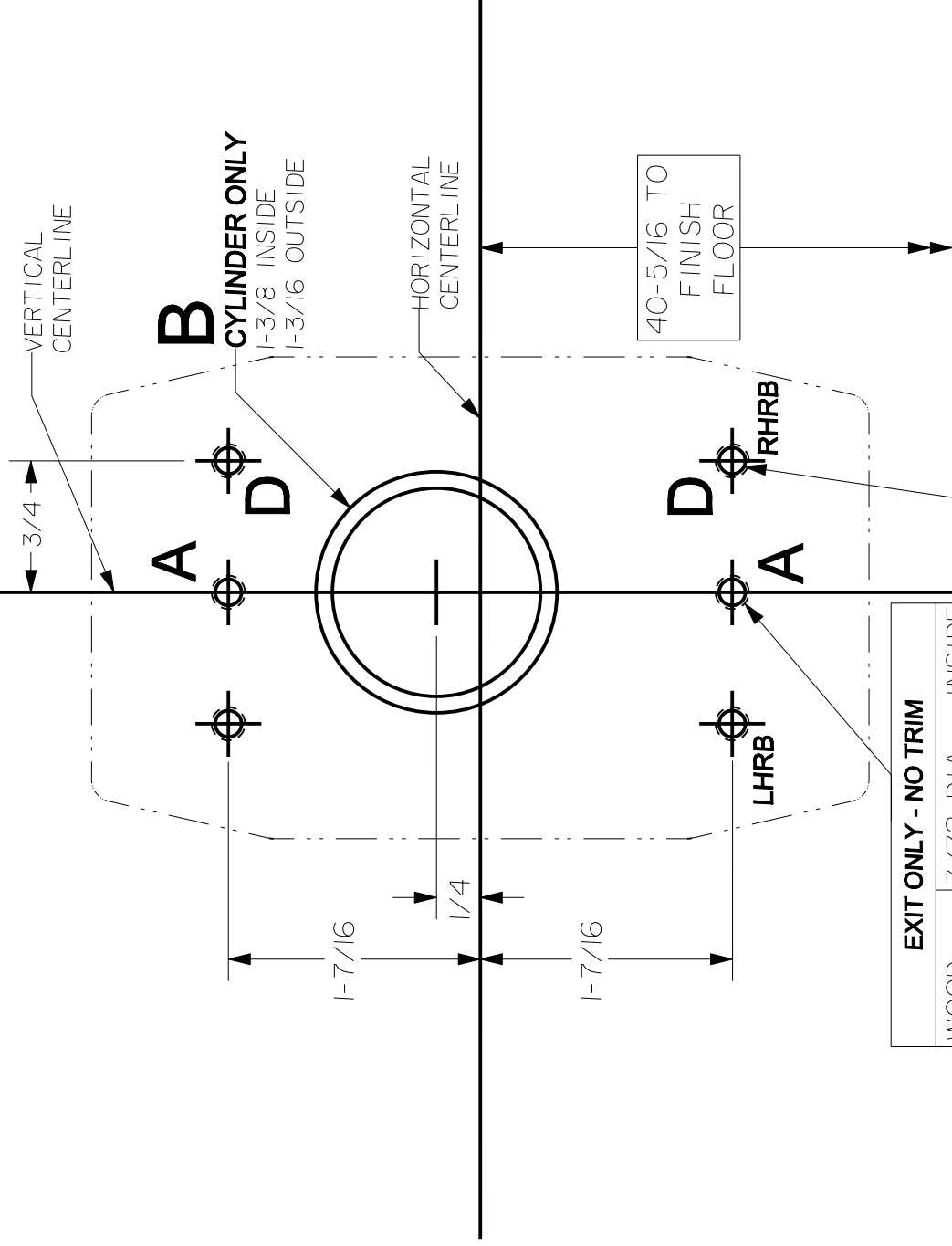


LOCK STILE CASE
5100, FL5100, 5200, FL5200, 5200LBR, FL5200LBR
EXIT ONLY, CYLINDER ONLY
 WHEN TRIM IS SPECIFIED SEE TRIM TAPE ON TEMPLATE



EXIT ONLY - NO TRIM	
WOOD	3/32 DIA - INSIDE
METAL	#10-24 MS OR #10 SMS-INSIDE
SEX BOLT	1/4 DIA-INSIDE 3/8 DIA-OUTSIDE

D #10-24 TAP
 2 - HOLES
**FOR FL5100
 DEVICE ONLY**

STANLEY

DRWG

01448-11-000

DATE

5/01/05

REVISION

B



Precision Hardware
 a Division of Stanley Security Solutions, Inc.
www.stanleysecuritysolutions.com

TEMPLATE MUST BE TO SCALE