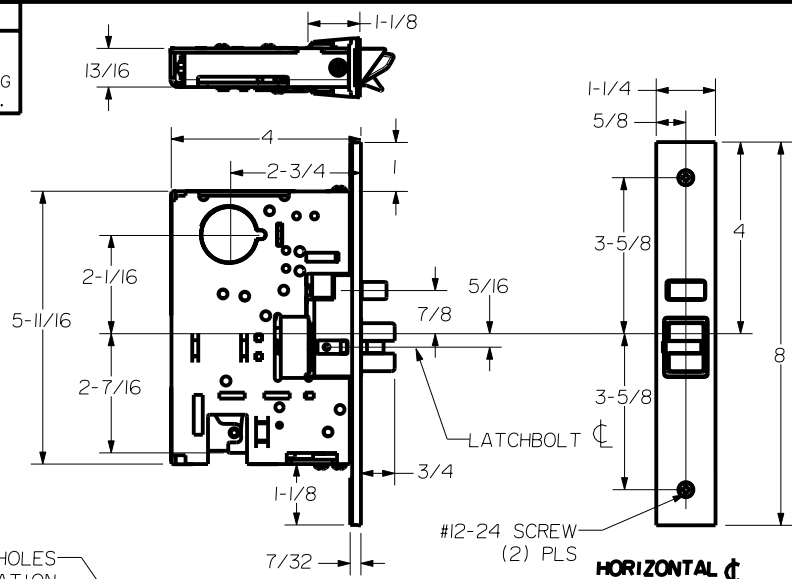


**REINFORCEMENT REQUIREMENTS**  
 PROVIDE ADEQUATE REINFORCEMENT TO METAL COVERED COMPOSITE AND HOLLOW METAL DOORS FOR THE DRILLING AND TAPPING FOR THE MACHINE SCREWS.

**SEX NUTS AND BOLTS**  
 SEX BOLTS ARE REQUIRED FOR PLASTIC, WOOD, METAL COVERED COMPOSITE AND HOLLOW METAL DOORS WITHOUT REINFORCEMENT

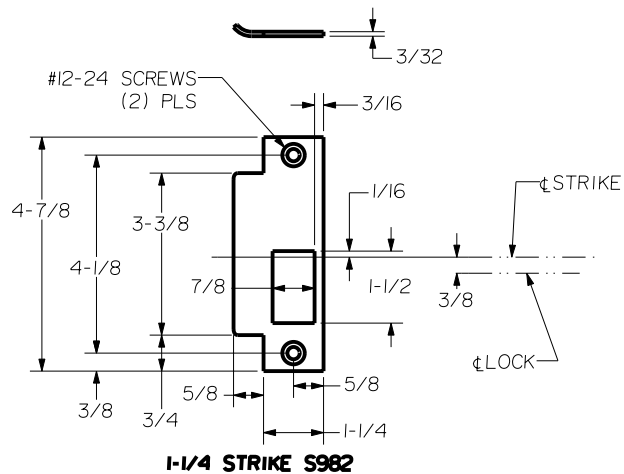
**SEX BOLT MACHINING**  
 DRILL 1/4 DIA. INSIDE  
 DRILL 3/8 DIA. OUTSIDE



DEVICES	TRIMS	HOLE B 1-3/8 DIA. THRU DOOR	SLOT C	DI
2301.FL2301	2001	NO	INSIDE ONLY	3/8 DIA OUTSIDE 1/4 DIA INSIDE
2302.FL2302	2002			
2303.FL2303	2003			
2305.FL2305	M2005	YES	THRU DOOR	NO
2315.FL2315	M2015	NO		

PREPARE THESE HOLES AT DEVICE INSTALLATION

RHR SHOWN - FOR LHR REVERSE STILE MACHINING

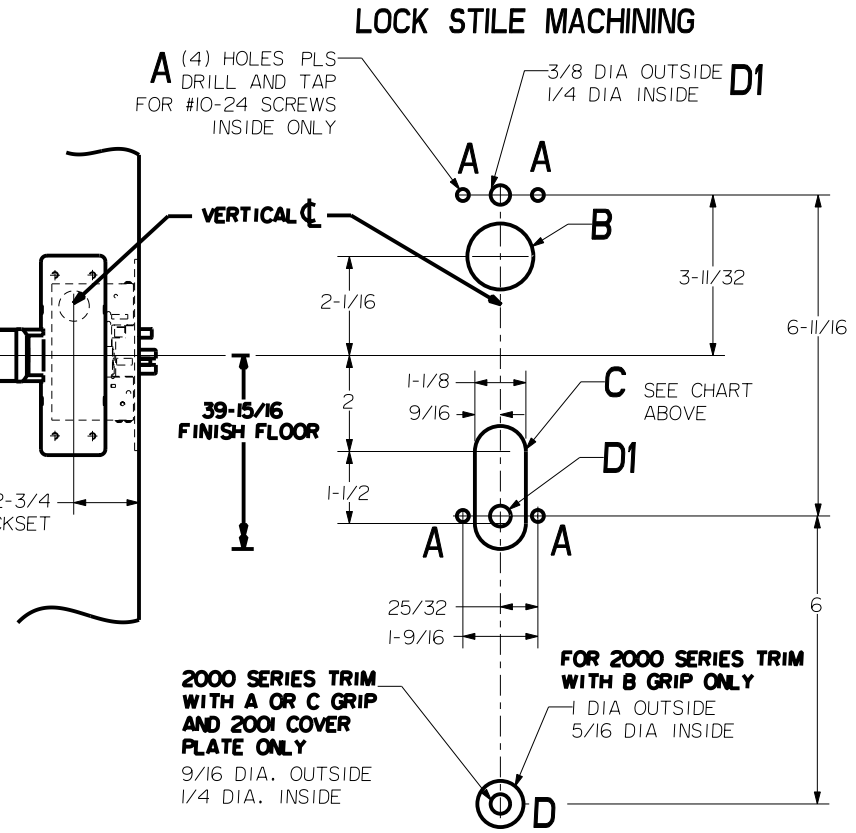


**1-1/4 STRIKE S982**

FOR ELECTRIC CONNECTIONS, SEE 02396-11 FOR WIRE CHASE LOCATIONS AND DIMENSIONS.

**S985, S984 OPTIONAL OPEN BACK STRIKES SEE TEMPLATE NUMBER HM-S985**

NOTE:  
 "LETTER" AT END OF TRIM MODEL NO. DESIGNATES GRIP STYLE. EXCEPT AS NOTED, GRIP STYLE HAS NO EFFECT ON STILE MACHINING.



<b>Precision Hardware</b> a Division of Stanley Security Solutions, Inc. <a href="http://www.stanleysecuritysolutions.com">www.stanleysecuritysolutions.com</a>			
DEVICE SERIES		TRIM SERIES	
2300, FL2300		2000	
STRIKE NO.	RELEASED DATE	TEMPLATE NO.	REV
S982	7/23/10	HM-2300B	D