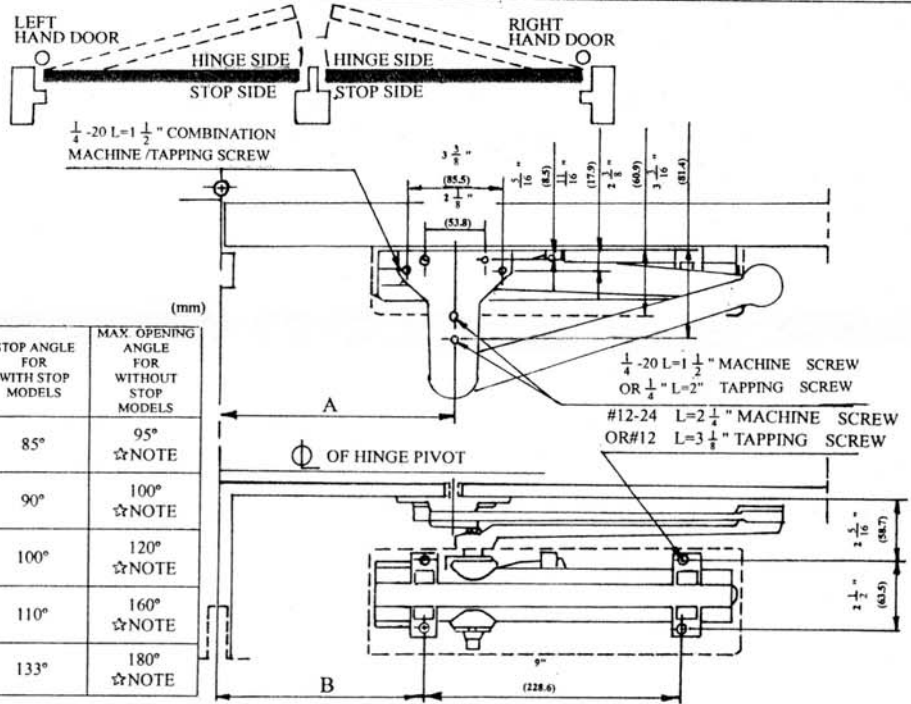


LEFT HAND DOOR
ILLUSTRATED.
SAME DIMENSIONS
APPLY FOR RIGHT HAND
DOOR-MEASURED FROM
HINGE \odot



DIMENSION		HOLD-OPEN ANGLE FOR HOLD-OPEN MODELS	STOP ANGLE FOR WITH STOP MODELS	MAX. OPENING ANGLE FOR WITHOUT STOP MODELS
A	B			
11 1/8 (283)	10 1/4 (260)	85°	85°	95° ☆NOTE
10 1/2 (267)	9 1/2 (244)	90°	90°	100° ☆NOTE
9 1/2 (238)	8 1/2 (216)	100°	100°	120° ☆NOTE
8 1/4 (210)	7 1/4 (187)	110°	110°	160° ☆NOTE
6 1/8 (168)	5 1/4 (146)	133°	133°	180° ☆NOTE

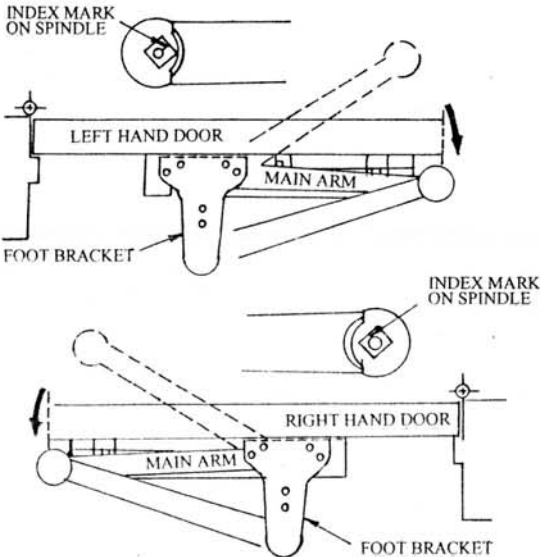
☆NOTE : A SUPPLEMENTAL DOOR STOP IS ALWAYS RECOMMENDED FOR INSTALLATIONS NOT INCORPORATING A STOP IN THE CLOSER ARM. DAMAGE TO THE DOOR, FRAME AND CLOSER MAY OCCUR IF NO STOP IS USED.

- A**
1. MARK LOCATIONS OF ATTACHING SCREWS ON DOOR AND FRAME AS SHOWN ABOVE.
 2. ATTACH CLOSER TO DOOR AND FOOT BRACKET TO FRAME ((SHORT END OF CLOSER TOWARD HINGE))

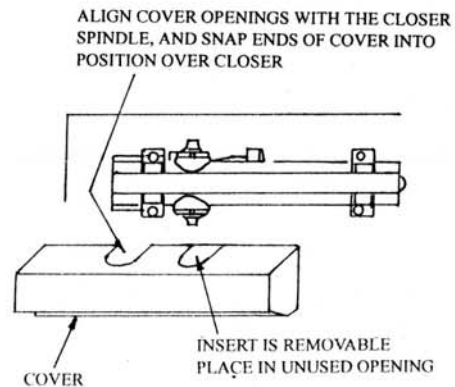
- C** MOUNT CLOSER ON DOOR AND MOUNT PARALLEL BRACKET TO FRAME STOP AS PER TEMPLATE.

- B**
- ASSEMBLE MAIN ARM TO CLOSER WITH INDEX MARK ON END OF SPINDLE 45° FROM AXIS OF ARM, AS ILLUSTRATED BELOW, USING A WRENCH ON THE BOTTOM SPINDLE TO ROTATE SPINDLE INTO POSITION. ATTACH ARM TO SPINDLE WITH WASHER AND SCREW.

- D**
- ADJUST AND REGULATE DOOR CLOSER AS DIRECTED ON D-4550 INSTALLATION INSTRUCTIONS FOR SPEED, LATCHING ACTION, BACKCHECK, AND DELAYED ACTION.
CAUTION : BACKCHECK IS ESSENTIAL TO PREVENT ARM FROM STRIKING ARM STOP WITH IMPACT.



- E** INSTALL COVER AS FOLLOWS :



FOR HOLD-OPEN ARM : A QUARTER TURN ON THE CONTROL HANDLE WILL ENGAGE OR DISENGAGE THE HOLD-OPEN FUNCTION.