

REINFORCEMENT REQUIREMENTS

PROVIDE ADEQUATE REINFORCEMENT TO METAL COVERED COMPOSITE AND HOLLOW METAL DOORS FOR THE DRILLING AND TAPPING FOR THE MACHINE SCREWS.

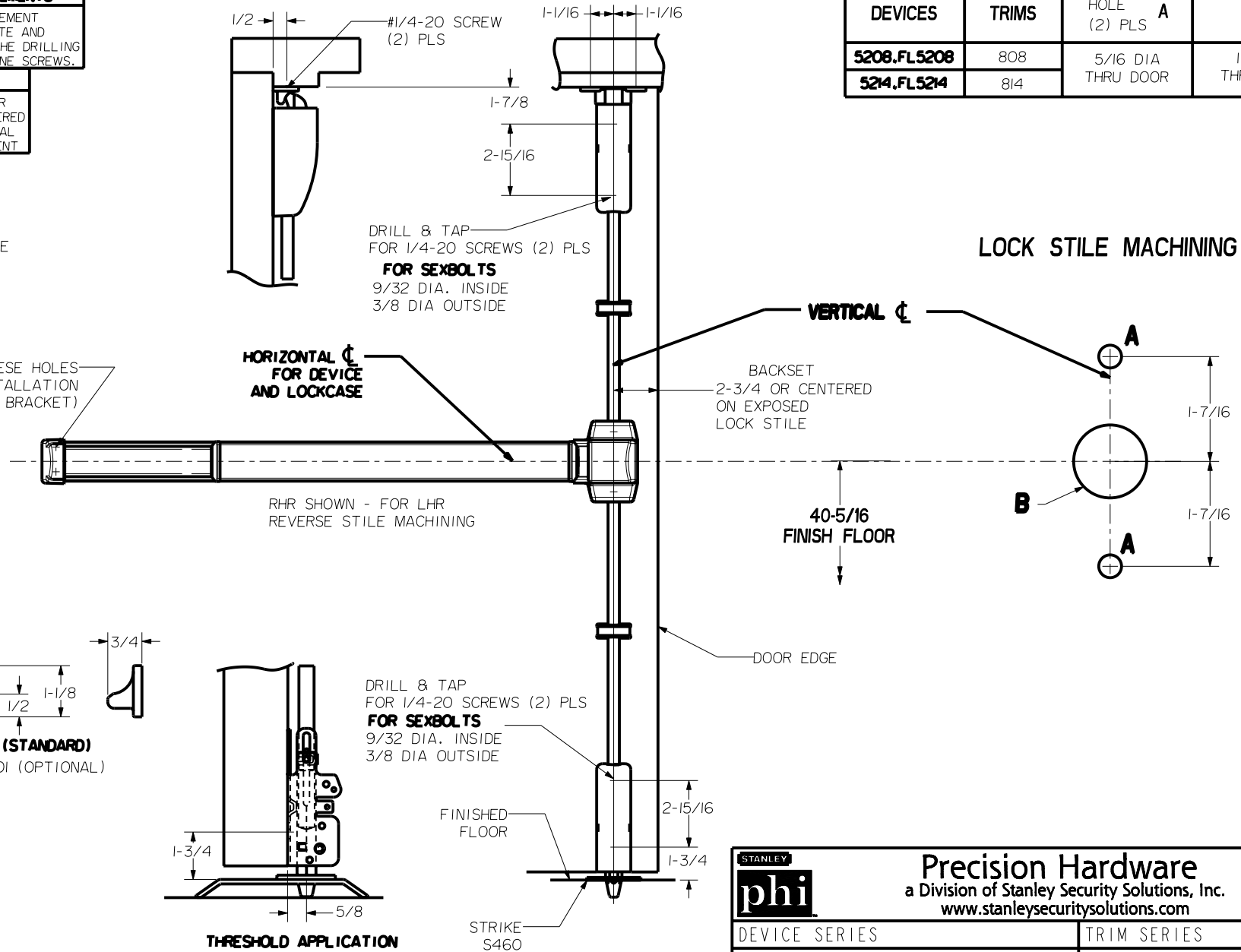
SEX NUTS AND BOLTS

SEX BOLTS ARE REQUIRED FOR PLASTIC, WOOD, METAL COVERED COMPOSITE AND HOLLOW METAL DOORS WITHOUT REINFORCEMENT

SEX BOLT MACHINING


HOLE "A" (2) PLS AND MOUNTING BRACKET
 DRILL 1/4 DIA. INSIDE
 DRILL 3/8 DIA. OUTSIDE

DEVICES	TRIMS	HOLE (2) PLS A	HOLE B
5208, FL5208	808	5/16 DIA THRU DOOR	1" DIA. THRU DOOR
5214, FL5214	814		



NOTE: FITS STOCK DOORS WITH ANSI A115.17 (161) AND ANSI A115.18 CUT-OUTS. REQUIRE TRIM THRU BOLT HOLES AT DEVICE INSTALLATION.

LBR DEVICES:
 OMIT BOTTOM BOLT MACHINING.
 FIRE BOLT REQ'D FOR FL DEVICES
 SEE DRAWING 01297-II-000 FOR DETAILS

 Precision Hardware a Division of Stanley Security Solutions, Inc. www.stanleysecuritysolutions.com			
DEVICE SERIES		TRIM SERIES	
5200, FL5200, 5200LBR, FL5200LBR		808, 814	
STRIKE NO.	RELEASED DATE	TEMPLATE NO.	REV
S300, S301, S460	5/01/05	HM-5200B	C