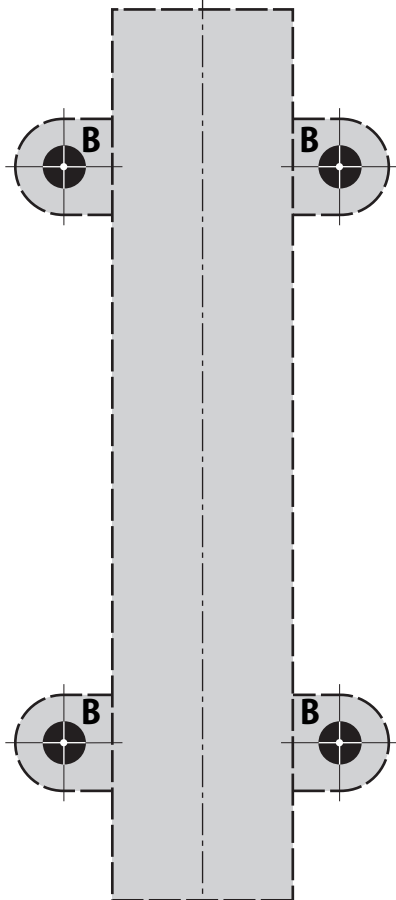


Mounting holes 'A'

#10-24 MS or #10 SMS

Fold along the dotted line

Vertical centerline



Mounting holes 'B'

Wood door Drill 3/32" dia pilot hole – inside

Metal door #10-24 MS or #10 SMS – inside

Sex bolts Drill 1/4" dia hole thru door
Redrill 5/16" dia hole – outside

TOT-3A Top H-Latch Template

For devices: 2200, FL-2200, 200, and FL-200 Series



DRWG

DATE

PN

REV

PRNT SPEC

T05137-11-000

8/29/07

2261996

B

ER7991-43



Precision Hardware

a Division of Stanley Security Solutions, Inc.

www.stanleysecuritysolutions.com