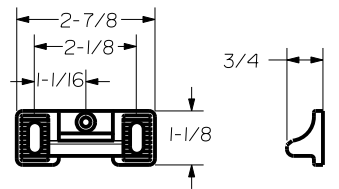
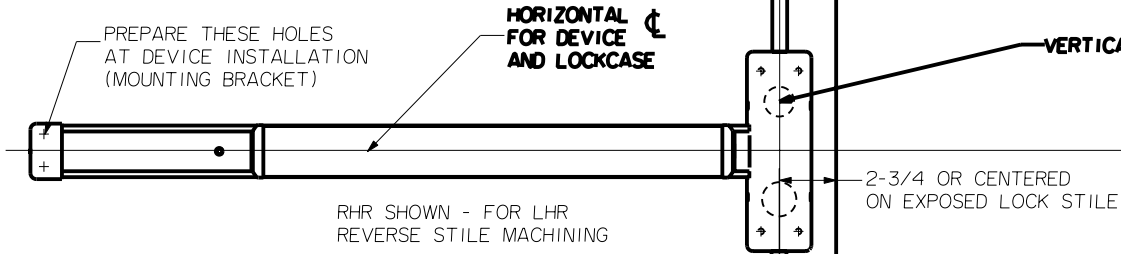
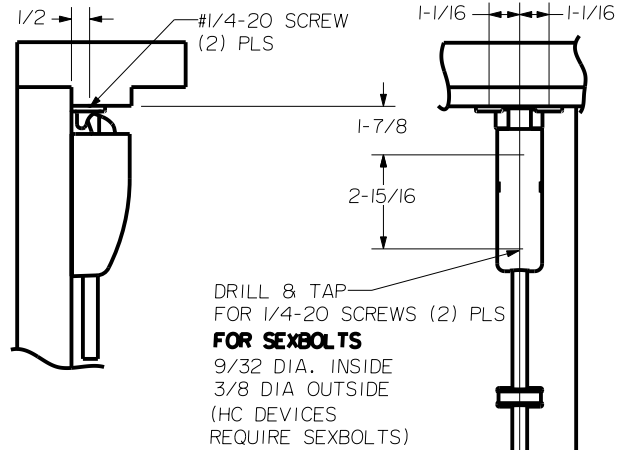


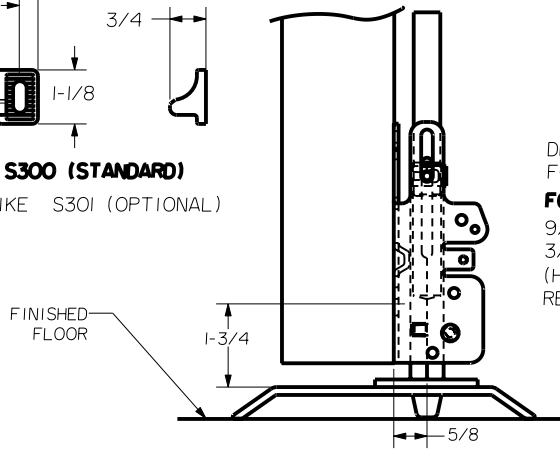
REINFORCEMENT REQUIREMENTS
 PROVIDE ADEQUATE REINFORCEMENT TO METAL COVERED COMPOSITE AND HOLLOW METAL DOORS FOR THE DRILLING AND TAPPING FOR THE MACHINE SCREWS.

SEX NUTS AND BOLTS
 SEX BOLTS ARE REQUIRED FOR PLASTIC, WOOD, METAL COVERED COMPOSITE AND HOLLOW METAL DOORS WITHOUT REINFORCEMENT

SEX BOLT MACHINING
 HOLE "A" (4) PLS AND MOUNTING BRACKET
 DRILL 1/4 DIA INSIDE
 DRILL 3/8 DIA OUTSIDE



STRIKE S300 (STANDARD)
 ROLLER STRIKE S30I (OPTIONAL)



THRESHOLD APPLICATION

NOTE:
 "LETTER" AT END OF TRIM MODEL NO. DESIGNATES LEVER OR GRIP STYLE. EXCEPT AS NOTED, LEVER OR GRIP STYLE HAS NO EFFECT ON STILE MACHINING.

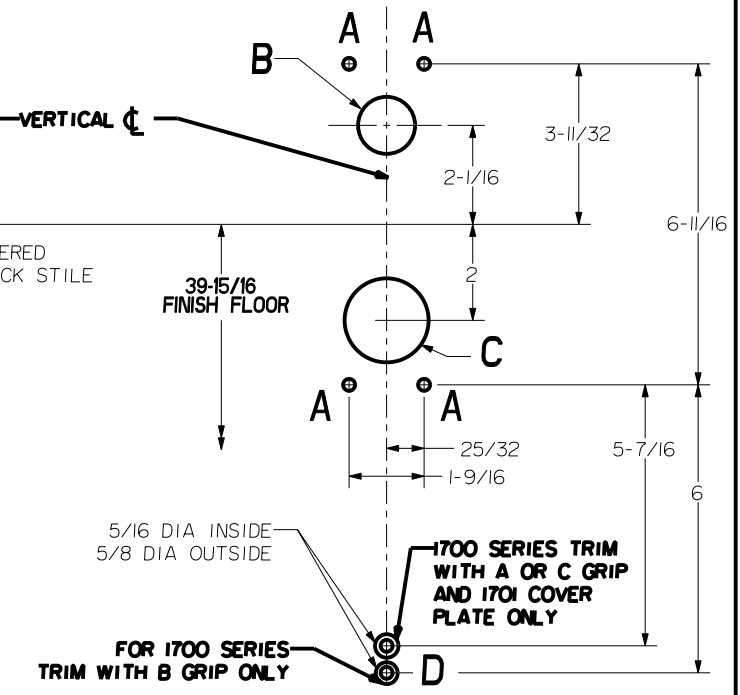
DRILL & TAP FOR 1/4-20 SCREWS (2) PLS FOR SEXBOLTS 9/32 DIA. INSIDE 3/8 DIA OUTSIDE (HC DEVICES REQUIRE SEXBOLTS)

STRIKE S460
 FINISHED FLOOR

LBR DEVICES:
 OMIT BOTTOM BOLT MACHINING.
 FIRE BOLT REQ'D FOR FL DEVICES
 SEE DRAWING 01297-II-000 FOR DETAILS

HOLE (4) PLS A	DEVICES	TRIMS	HOLE B	HOLE C
#10-24 TAP INSIDE ONLY	220I.FL220I	EXIT ONLY	NO	NO
	2203.FL2203	CYL ONLY	1-3/8 DIA INSIDE 1-3/16 DIA OUTSIDE	
1/4 DIA INSIDE 3/8 DIA OUTSIDE	220I.FL220I	170I,490I	NO	1-3/4 DIA THRU DOOR
	2202.FL2202	1702,4902		
	2203.FL2203	1703,4903		
	2205.FL2205	1705		
	2208.FL2208	4908,V4908		
	2214.FL2214	4914		
	2215.FL2215	1715	NO	

LOCK STILE MACHINING



Precision Hardware a Division of Stanley Security Solutions, Inc. www.stanleysecuritysolutions.com			
DEVICE SERIES	TRIM SERIES		
2200, FL2200, 2200LBR, FL2200LBR	EXIT ONLY, CYL ONLY, 1700,4900		
STRIKE NO.	RELEASED DATE	TEMPLATE NO.	REV
S300, S30I, S460	5/01/05	HM-2200A	C