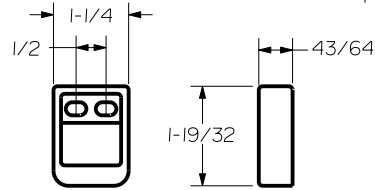


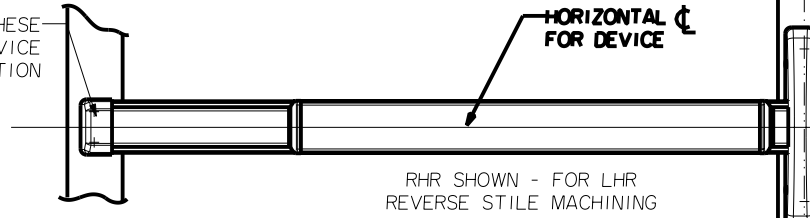
SEX BOLT MACHINING
 DRILL 1/4 DIA. INSIDE
 DRILL 3/8 DIA. OUTSIDE

DOOR SKIN PLUS REINFORCEMENT - 5/32 MAX



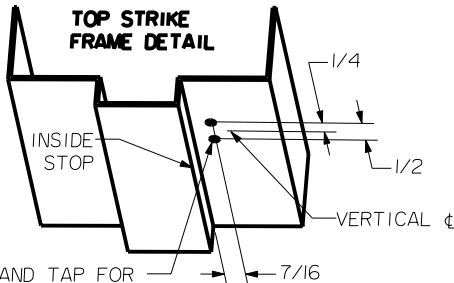
S519 TOP STRIKE
(SURFACE APPLIED)

PREPARE THESE HOLES AT DEVICE INSTALLATION

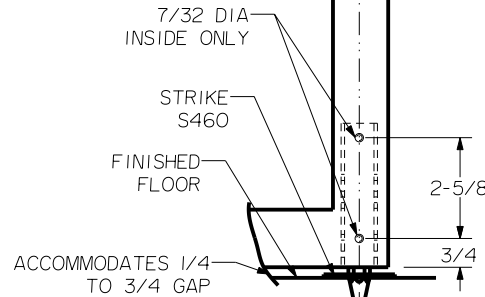


HORIZONTAL C FOR DEVICE

RHR SHOWN - FOR LHR REVERSE STILE MACHINING



DRILL AND TAP FOR #10-24 SCREWS



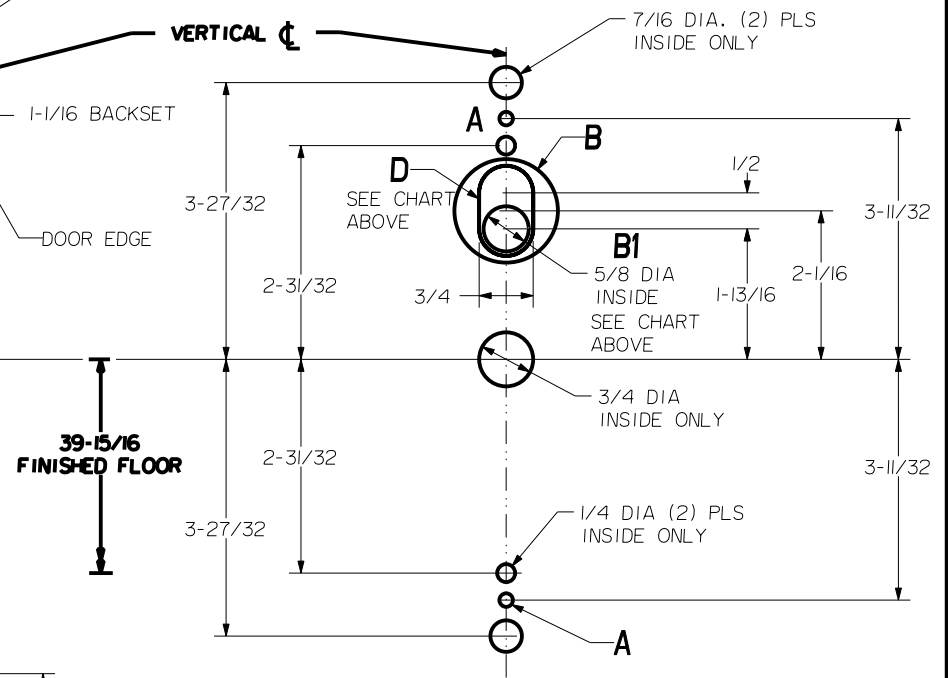
ACCOMMODATES 1/4 TO 3/4 GAP

LBR DEVICES:
 OMIT BOTTOM BOLT MACHINING.

NOTE: "LETTER" AT END OF TRIM MODEL NO. DESIGNATES LEVER STYLE. EXCEPT AS NOTED, LEVER STYLE HAS NO EFFECT ON STILE MACHINING.

HOLE (2) PLS A	DEVICES	TRIMS	HOLE B	HOLE B1	SLOT D
#10-24 TAP INSIDE ONLY	2601	EXIT ONLY	NO	NO	NO
	2603	CYL ONLY	1-3/16 DIA. OUTSIDE		3/4 SLOT INSIDE
1/4 DIA INSIDE 3/32 DIA OUTSIDE	2601	2901	NO	YES	NO
	2602	2902			
	2603	2903			

LOCK STILE MACHINING



		Precision Hardware a Division of Stanley Security Solutions, Inc. www.stanleysecuritysolutions.com	
DEVICE SERIES		TRIM SERIES	
2600, 2600LBR		EXIT ONLY, CYL ONLY, 2901, 2902, 2903	
STRIKE NO.	RELEASED DATE	TEMPLATE NO.	REV
S519, S460	5/01/05	AL-2600A	C