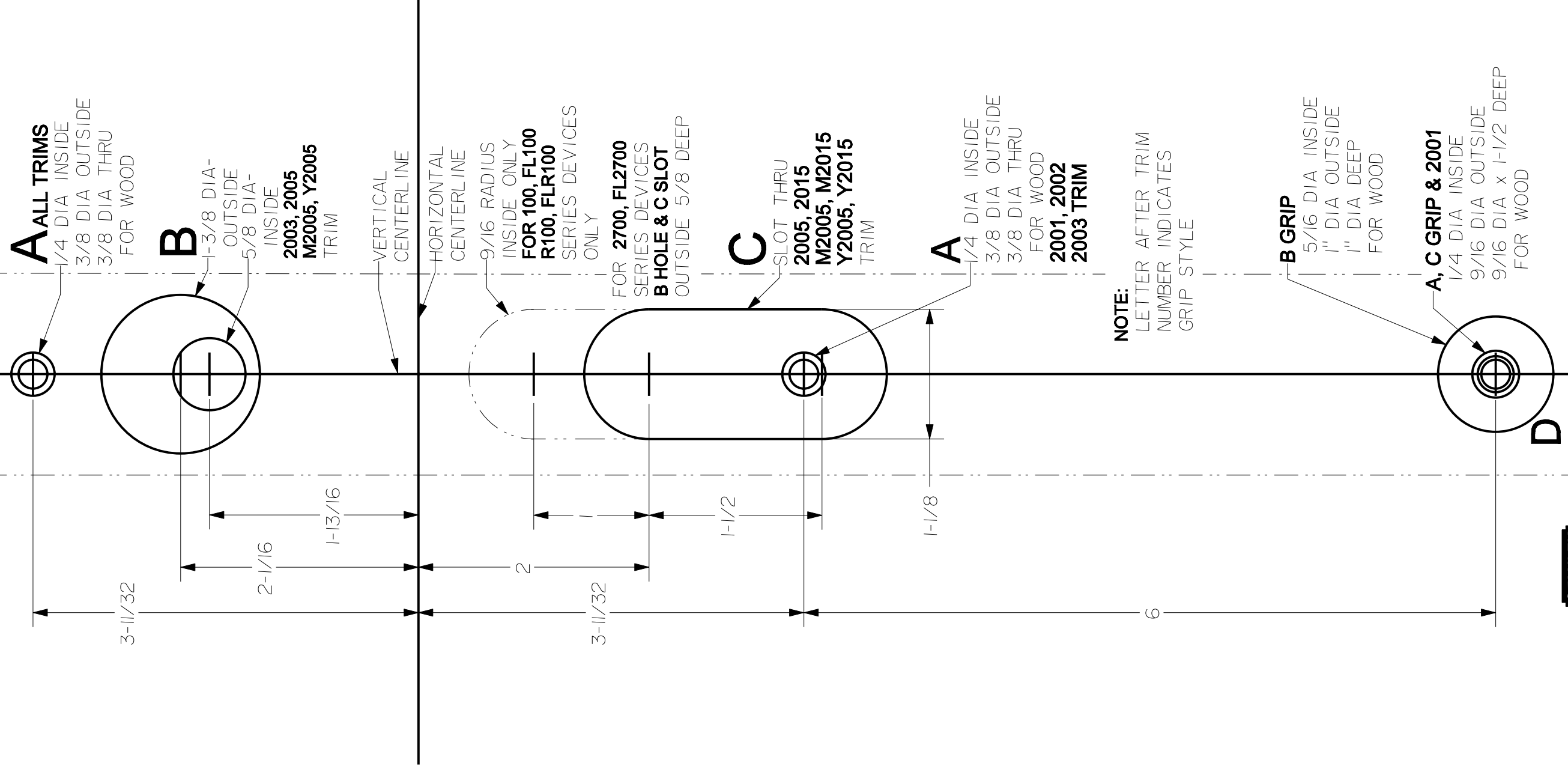


2000 SERIES TRIM

2001, 2002, 2003, 2005, 2015
M2005, M2015, Y2005, Y2015

FOR DEVICE SEE SPECIFIC TAPE ON TEMPLATE



A ALL TRIMS

1/4 DIA INSIDE
3/8 DIA OUTSIDE
3/8 DIA THRU
FOR WOOD

B

1-3/8 DIA-
OUTSIDE
5/8 DIA-
INSIDE

2003, 2005
M2005, Y2005
TRIM

VERTICAL
CENTERLINE

HORIZONTAL
CENTERLINE

9/16 RADIUS
INSIDE ONLY

FOR 100, FL100
R100, FLR100

SERIES DEVICES
ONLY

FOR 2700, FL2700

SERIES DEVICES

B HOLE & C SLOT

OUTSIDE 5/8 DEEP

C

SLOT THRU

2005, 2015

M2005, M2015

Y2005, Y2015

TRIM

A

1/4 DIA INSIDE

3/8 DIA OUTSIDE

3/8 DIA THRU

FOR WOOD

2001, 2002

2003 TRIM

NOTE:

LETTER AFTER TRIM

NUMBER INDICATES

GRIP STYLE

B GRIP

5/16 DIA INSIDE

1" DIA OUTSIDE

1" DIA DEEP

FOR WOOD

A, C GRIP & 2001

1/4 DIA INSIDE

9/16 DIA OUTSIDE

9/16 DIA x 1-1/2 DEEP

FOR WOOD



01803-11-000

DRWG

DATE

5/01/05

REVISION

B

Precision Hardware

a Division of Stanley Security Solutions, Inc.

www.stanleysecuritysolutions.com

TEMPLATE MUST BE TO SCALE