

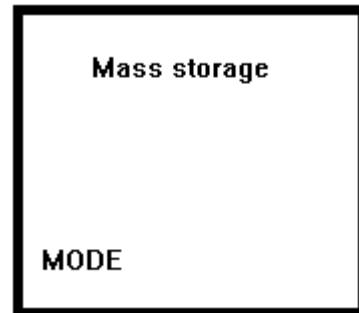
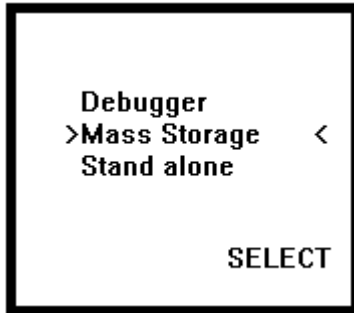
Stanley Commercial Hardware EL Stand Alone Firmware Upgrade Procedures

*****First make sure your firmware on the Jtag programmer is up to date; see Software Installation instruction to do this.*****

If your EL Lock firmware is not already on the JTag Programmer then you must load it into the programmer (see Step 1); if the new EL Lock firmware is already on the JTag Programmer (see step 5).

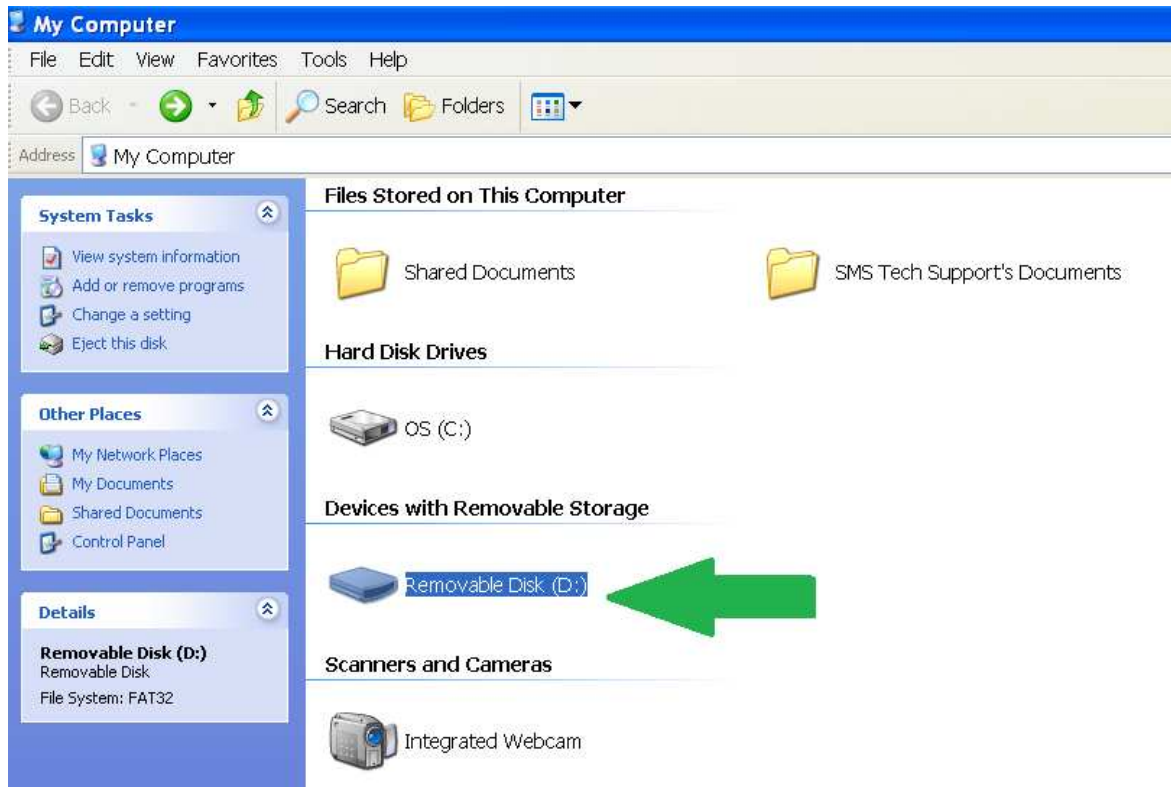
Step 1: Connect your programmer to the daughter card and to your computer.

Step 2: Looking at the programmer move the arrows to “Mass Storage” then press the right arrow on the pad.



Your screen should now look like this

Step 3: Now on your computer search to “My Computer” and find the programmer (it should be listed as removable storage). Open the storage space.



Step 4: Copy and paste your new EL Lock firmware (HEX or TXT Files and OPJ File, provided by Stanley) here.

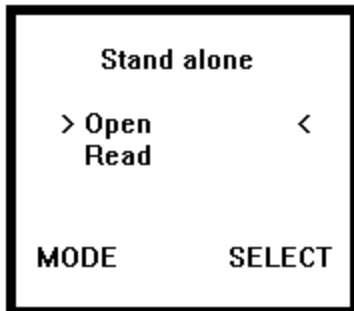
Stanley Commercial Hardware EL Stand Alone Firmware Upgrade Procedures

Step 5: Connect your JTag Programmer to the Daughter Card via the ribbon cable and USB provided. Align Daughter Card with connection point on your lock. ****Note you do not have to be plugged into the computer any longer, but your lock will need to have battery power for the JTag Programmer to work.**

Step 6: Looking at the Jtag Programmer move the arrows to “Stand alone” and then press the right arrow on the pad.

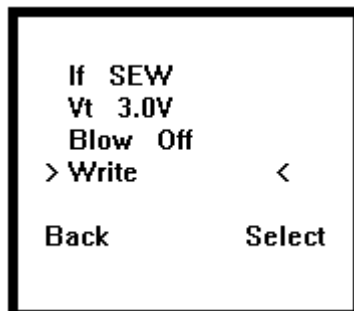


Step 7: Move the arrows to “OPEN” and then press the right arrow on the pad.



Step 8: Move the arrows to the firmware you want to upload from the list then press the right arrow on the pad.

Step 9: On the next screen confirm “IF” is set to “SEW”, “VT” is set to “3.0V”, and “BLOW” is set to “OFF” (if you turn BLOW “ON” you will NOT be able to program this board again in the future). Move the arrows to “Write” then press the right arrow on the pad TWICE. Your screen will say “Wait” for approximately 45 seconds and then “write done” will be displayed for about 5 seconds before going back to the previous screen.



Step 10: Disconnect the daughter card and reassemble the lock. –Firmware is upgraded!